

2010K-RC

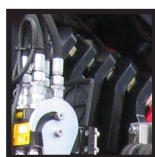


- power to lift





LOADING GROUP HC1/HD4/B3		2010-K2	2010-K3	2010-K4	2010-K5	2010-K6
Type		K-RC				
TECHNICAL DATA						
Load moment	tm	18.4	17.9	17.5	17.0	16.6
Hydraulic reach	m	8.3	10.3	12.5	14.8	17.2
Slewing torque	kgm	2426				
Slewing angle	°	400				
Working pressure	bar	330				
Weight excl. stabilizer legs	kg	1770	1925	2080	2220	2345
Weight of stabilizer legs, standard	kg	275				
Pump performance	l/min	55-70				
Oil tank capacity, separate tank	l	90				
Power consumption	kW	30-38				
GEOMETRY						
Height above mounting surface	mm	2295				
Width, folded	mm	2500				
Length of crane, no extra valves	mm	885	885	885	885	885
Length with 2 extra valves in internal hose reel	m	885	885	885	885	885
Single Power Plus link arm system		Basic				
Over-bending on crane	°	15				
Hook height 1 m from column	m	2.7	2.7	2.6	2.5	2.4
CONTROL MODE						
Radio remote control of crane		Basic				
Manual operation of stabilizer functions		Basic				
Remote control box with HMF InfoCentre		Option				
Remote control box, linear control levers (L) or joysticks (J)		L / J				
Stand-up controls with bracket for radio remote control box		Option				
Top seat on column with bracket for remote control box		Option				
CONTROLS						
RCL 5300 Safety System		Basic				
Control valve type (RC) for crane operation		Basic				
Control valve type (-h) for operation of stabilizer legs and beams		Basic				
HDL speed adaptation system		Basic				
OPTIONS: HYDRAULIC EQUIPMENT						
Oil cooler		Option				
High-pressure filter		Option				
Hydraulically extensible stabilizer beam		Option				
Multi-coupling for extra valves in hose guides		Option				
Extra valves in hose guides		Option				
Extra valves in hose reels internally in the jib extensions		Option				
2 or 4 available functions for operating the separate traverse		Option				
1500 kg or 2500 kg hydraulic hoist on the crane		Option				
90 l oil tank mounted on the crane		Option				
OTHER EQUIPMENT		2010-K2	2010-K3	2010-K4	2010-K5	2010-K6
Number of manual extensions		-	-	3	3	3
Fixed or variable flow pump		Option				
Work light on crane		Option				
Stabilizer leg, 30°/60° manual swing-up, type R, 0.8-1.3 m		Option				
Manual swing-up stabilizer leg with gas spring		Option				
Biodegradable oil		Option				
Footplate extended 100 mm or 200 mm		Option				



Multi-Coupling

A multi-coupling makes it easy and simple to mount and dismount hydraulic accessories.



180° Swing-Up Stabilizer Leg

Swing-up stabilizer leg to 180° - manual with gas spring or hydraulically operated.



HMF InfoCentre

The HMF InfoCentre (option) indicates the functional condition of the crane as well as the reasons for crane stops and errors. With EVS, the current stability of the vehicle is also indicated.



Single Link Arm System

The HMF single Power Plus link arm system has an excellent lifting capacity at long reach and works particularly fast when loading and unloading with grab.



Immaculate Finish - Year after Year

HMF does not compromise on the surface treatment. This is made possible thanks to HMF's ZetaCoat pre-treatment followed by EQC powder coating, ensuring that corrosion never takes over. We guarantee that you obtain the best imaginable paint quality - a quality that never fades and that can withstand damage.



Extra Valves with Variation

A well-known and usual hose routing to the end of the extensions means that 1 or 2 extra valves are fed in sturdy hose guides alongside the jib extension system. If further efficient protection of the hoses is required, 1 or 2 extra valves can be fed in internal hose reels and lie particularly well protected. In case of more than 6 hydraulic extensions or a reach of approx. 17 m, 1 or 2 extra valves will be fed in external, smooth-running and efficient hose reels.



EVS - active Securing of Stability

HMF's patent pending stability safety system, EVS, is continuously taking into account the current load on the vehicle so that crane and truck are in perfect balance. As the system includes the load on the truck body as a part of the tare weight of the vehicle, it means that you actually obtain a considerably larger working area with a load on the truck body - thanks to EVS.



HMF Radio Remote Control type RC

(Remote Control)

HMF radio remote control provides the operator with all advantages and possibilities for remote control of the crane functions and important safety functions. The crane operator can move in the entire working area and can at any time position himself optimally and safely in relation to the lifting task. The crane is equipped with the HDL system which automatically adapts the crane speed to the working situation when it is exposed to a lot of stress.

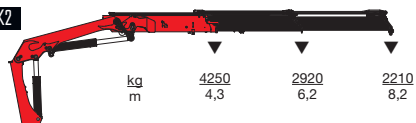


- power to lift

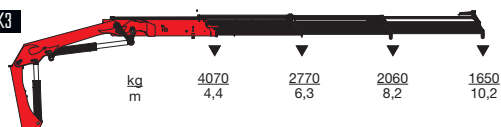


HMF 2010K-RC

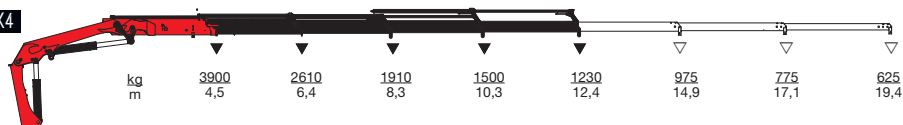
HMF 2010-K2



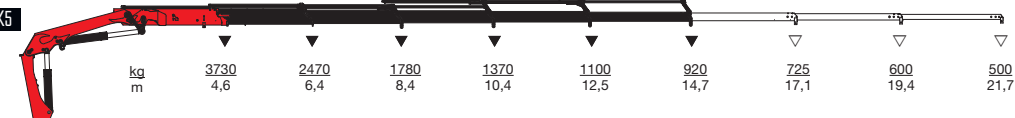
HMF 2010-K3



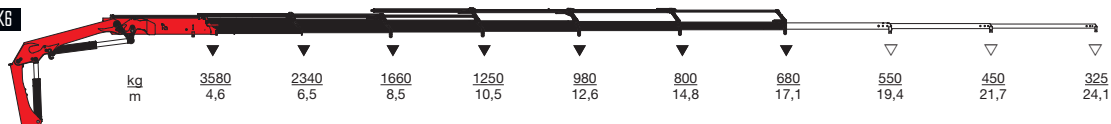
HMF 2010-K4



HMF 2010-K5



HMF 2010-K6



▼ Lifting capacity without manual extensions
▽ Lifting capacity with manual extensions



- power to lift
HMF Group A/S

Oddervej 200 · DK-8270 Højbjerg
Tel.: +45 8627 0800 · Fax: +45 8627 0744 · info@hmf.dk

www.hmf.dk