

2120-K

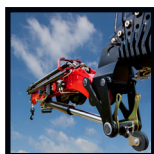


- power to lift



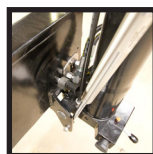


| LOADING GROUP HC1/HD5/B3 | | 2120-K2 | 2120-K3 | 2120-K4 | 2120-K5 | 2120-K6 | 2120-K7 | 2120-K8 |
|--|-------|---------|---------|---------|---------|---------|---------|---------|
| Type | | KX+ | | | | | | |
| TECHNICAL DATA | | | | | | | | |
| Load moment | tm | 19.5 | 19.1 | 18.6 | 18.1 | 17.7 | 17.2 | 17.0 |
| Hydraulic reach | m | 8.3 | 10.3 | 12.5 | 14.8 | 17.2 | 19.4 | 21.7 |
| Slewing torque | kgm | | | | 2424 | | | |
| Slewing angle | ° | | | | 400 | | | |
| Working pressure | bar | | | | 345 | | | |
| Weight excl. stabilizers | kg | 1840 | 1995 | 2180 | 2320 | 2445 | 2550 | 2635 |
| Weight of stabilizer legs, standard | kg | | | | 275 | | | |
| Pump performance | l/min | | | | 55-100 | | | |
| Oil tank capacity, tank fitted on crane | l | | | | 90 | | | |
| Power consumption | kW | | | | 32-58 | | | |
| GEOMETRY | | | | | | | | |
| Height above mounting surface, folded | mm | | | | 2295 | | | |
| Width, folded | mm | | | | 1005 | | | |
| Length of crane, no extra valves | mm | 885 | 885 | 885 | 885 | 885 | 995 | 995 |
| Lifting height 1 m from column | m | 2.7 | 2.7 | 2.6 | 2.5 | 2.4 | 2.3 | 2.2 |
| Dual Power Plus link arm system | | | | | Basic | | | |
| Over-bending on crane | ° | | | | 15 | | | |
| Over-bending on Fly-Jib | ° | 20 | | 20 | 20 | | | |
| CONTROL MODE | | | | | | | | |
| Radio remote control of crane | | | | | Basic | | | |
| Manual operation of stabilizer functions | | | | | Basic | | | |
| Remote control box with HMF InfoCentre | | | | | Option | | | |
| Remote control box, linear control levers (L) or joysticks (J) | | | | | L / J | | | |
| Stand-up controls with bracket for radio remote control box | | | | | Option | | | |
| Top seat on column with bracket for remote control box | | | | | Option | | | |
| CONTROLS | | | | | | | | |
| RCL 5300 Safety System | | | | | Basic | | | |
| Proportional control valve type (-d) for radio remote control | | | | | Basic | | | |
| Dual control of stabilizer functions (crane) | | | | | Basic | | | |
| Electronic speed adaptation system HDL-d | | | | | Basic | | | |
| OPTIONS: HYDRAULIC EQUIPMENT | | 2120-K2 | 2120-K3 | 2120-K4 | 2120-K5 | 2120-K6 | 2120-K7 | 2120-K8 |
| Oil cooler | | | | | Option | | | |
| Fly-Jib 350 with 3 or 4 hydr. extensions | | | | | Option | | | |
| Fly-Jib 600 with 3 or 4 hydr. extensions | | Option | | Option | | | | |
| 1500 kg or 2500 kg hydraulic winch on the crane | | | | | Option | | | |
| 1500 kg or 2500 kg hydraulic winch led via the Fly-Jib | | | | | Option | | | |
| Radio remote controlled stabilizer functions | | | | | Option | | | |
| Extra valves in hose guides | | Option | Option | Option | Option | Option | | |
| Extra valves in hose reels internally in the jib extensions | | Option | Option | Option | Option | Option | | |
| Extra valves in external hose reels | | | | | | | Option | Option |
| 90 l oil tank mounted on the crane | | | | | Option | | | |
| OTHER EQUIPMENT | | 2120-K2 | 2120-K3 | 2120-K4 | 2120-K5 | 2120-K6 | 2120-K7 | 2120-K8 |
| Number of manual extensions | | 3 | | | 3 | 3 | 2 | 1 |
| Work light on crane | | | | | Option | | | |
| Work light on Fly-Jib | | Option | | Option | Option | | | |
| 1 or 2 extra valves on Fly-Jib in hose reels | | Option | | Option | Option | | | |



Fly-Jib

HMF provides different types of Fly-Jibs that may be equipped with e.g. hydraulic winch or extra valves.



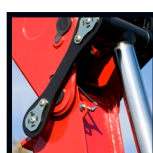
180° swing-up stabilizer leg

Swing-up stabilizer leg to 180° with or without radio remote control.



HMF InfoCentre

The HMF InfoCentre continuously informs the operator about the current load moment and condition of the crane.



Double link arm system

The HMF dual Power Plus link arm system has an excellent lifting capacity at long reach and in high positions as well as it makes it possible to lift a heavy load close to the column.



Immaculate finish - year after year

HMF does not compromise on the surface treatment. This is made possible thanks to HMF's Zetacoat pre-treatment followed by EQC powder coating, ensuring that corrosion never takes over. We guarantee that you obtain the best imaginable paint quality - a quality that never fades and that can withstand damage.



Extra valves with variation

A well-known and usual hose routing to the end of the extensions means that 1 or 2 extra valves are fed in sturdy hose guides alongside the jib extension system. If further efficient protection of the hoses is required, 1 or 2 extra valves can be fed in internal hose reels and lie particularly well protected. In case of more than 6 hydraulic extensions or a reach of approx. 17 m, 1 or 2 extra valves will be fed in external, smooth-running and efficient hose reels.



EVS - active securing of stability

HMF's patent pending stability safety system, EVS, is continuously taking into account the current load on the vehicle so that crane and truck are in perfect balance. As the system includes the load on the truck body as a part of the tare weight of the vehicle, it means that you actually obtain a considerably larger working area with a load on the truck body - thanks to EVS. This means that you obtain both an extraordinary high level of safety and larger capacity with EVS.



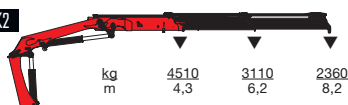
HMF radio remote control

The HMF radio remote control is part of a unique operation and safety system (TCC - Total Crane Control), which provides the operator with all advantages and possibilities for operating the crane functions and important safety functions on the HMF RCL Safety System. By means of the remote control box you can carry out many tasks besides operating the crane, independent of a fixed control position.

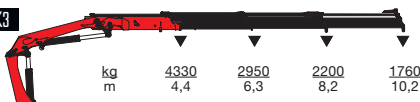


- power to lift

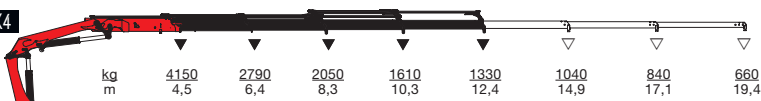
HMF 2120-K2



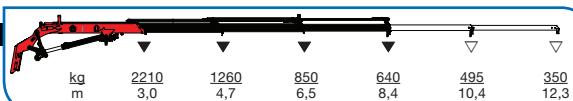
HMF 2120-K3



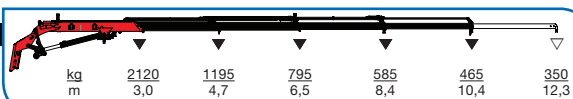
HMF 2120-K4



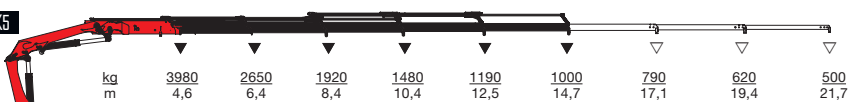
HMF FJ600-K3



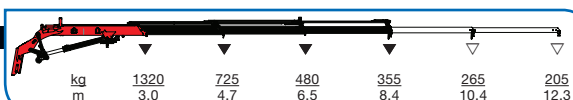
HMF FJ600-K4



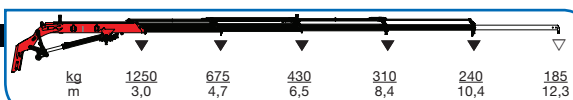
HMF 2120-K5



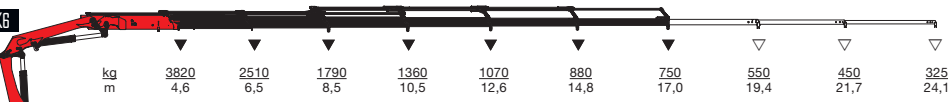
HMF FJ350-K3



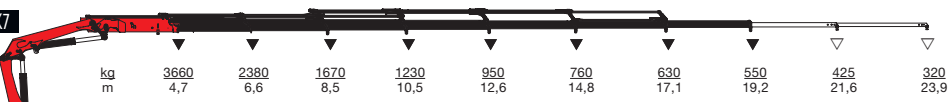
HMF FJ350-K4



HMF 2120-K6



HMF 2120-K7



HMF 2120-K8



▼ Lifting capacity, no manual extensions
▽ Lifting capacity with manual extensions



- power to lift
HMF Group A/S

Oddervej 200 · DK-8270 Højbjerg
Tel.: +45 8627 0800 · Fax: +45 8627 0744 · info@hmf.dk

www.hmf.dk