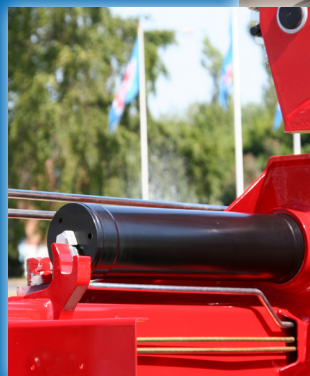


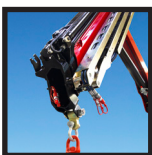
HMF 2310S-RCS



- power to lift

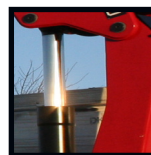


LOADING GROUP HC1/HD5/B3		2310S3-RCS	2310S4-RCS
Type			RCS
TECHNICAL DATA			
Load moment	tm	21.7	21.4
Hydraulic reach	m	9.1	11.0
Slewing torque	kgm		2762
Slewing angle	°		400
Working pressure	bar		345
Weight excl. stabilizer legs	kg	2065	2265
Weight of stabilizer legs, standard	kg		290
Pump performance	l/min		70-120
Oil tank capacity, separate tank	l		160
Power consumption	kW		40-70
Slewing speed	°/sec		24
Time, one turn [360°] at max. flow	sec		15
GEOMETRY			
Height above mounting surface	mm		2610
Width - unfoldable	mm		2500
Length	mm	815	815
Hook height 1 m from column	m		4500
Single Power Plus link arm system			Yes
Over-bending on crane	°		2
S-boom system with retracted jib	°		Basic
CONTROL MODE			
Radio remote control of crane			Basic
Manual operation of stabilizer functions			Basic
Remote control box with HMF InfoCentre			Option
Remote control box, linear control levers (L) or joysticks (J)			L / J
Extra digital outputs on remote control box			Option
CONTROLS			
RCL 5300 Safety System			Basic
Proportional control valve type (-d) for radio remote control			Basic
Dual control of stabilizer functions (crane)			Basic
Electronic speed adaptation system HDL-d			Basic
SDC (Stabilizer Duty Control)			Basic
OPTIONS: HYDRAULIC EQUIPMENT		2310S3-RCS	2310S4-RCS
Oil cooler			Option
High-pressure filter			Basic
Radio remote controlled stabilizer functions			Option
Extra valves in hose guides			Option
90 l oil tank mounted on the crane			Option
Manual swing-up stabilizer leg 20° - 60°			Option
Hydraulic swing-up stabilizer leg, 180°			Option
Prepared for variable flow pump			Option
OTHER EQUIPMENT			
IPA (Intelligent Parking Assist System)			Option
Work light on crane			Option
Temperature monitoring			Option
PFC (Priority Flow Control)			Option



Extra Valves, Guides

2 extra valves are fed in sturdy hose guides alongside the jib extension system.



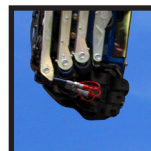
Single Link Arm System

HMF single Power Plus link arm system has a smooth and excellent lifting capacity at long reach.



Radio Remote Controlled Stabilizers

Radio remote control complies with the operator's demand for being independent of where to operate the stabilizers.



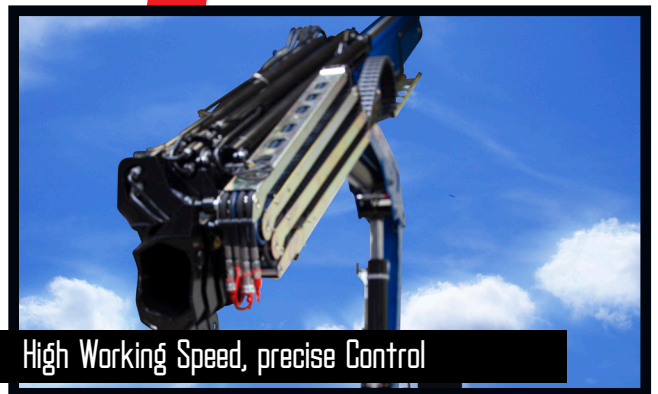
SHG (Signal for Hydraulic hook Grab)

Signal wire (7 x 0.75 mm² cable) led to the end of the extensions for hydraulic hook for emptying of underground refuse containers.



IPA (Intelligent Parking Assist system)

The IPA warning system helps the operator stowing the boom system in situations where insufficient visibility or the risk of erroneous operation might cause damage to the crane or the equipment. Both the position and the speed of the boom system are being checked, and a clear signal light indicates the correct stowing position.



High Working Speed, precise Control

With the Danfoss PVG 32 control valve the HMF 2310S-RCS obtains very high working speeds without compromising neither safety nor precision. A hydraulic pump flow of up to 120 l/min and a variable flow pump, which at the same time is very energy-efficient, means all in all lower costs, because a short working cycle results in more collections per day.



Special optimized Boom System

The HMF 2310-RCS is equipped with a specially developed boom system, which is particularly adapted to work with underground refuse containers (Molok deep collection containers). With 3 or 4 hydraulic extensions giving a reach of up to 11 m, the crane has a very large efficient working area. The compact geometric design and optimized installation height only take up minimum space and the crane can therefore easily be stowed over a compactor.



Efficient optimization Systems

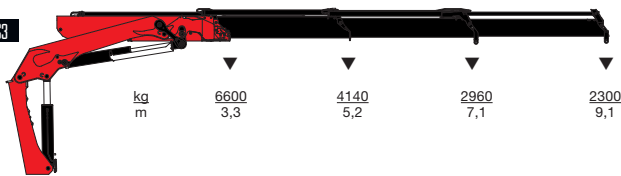
HMF offers efficient and sophisticated optimization systems for the HMF 2310S-RCS that saves time and facilitates the daily work for the busy crane operator. For example the SDC-function (Stabilizer Duty Control) makes it possible for the crane operator to work with the crane both with and without the stabilizer legs being completely down. The PFC-function (Priority Flow Control) gives a particularly efficient and user-friendly flow distribution for the individual working functions on the crane so that speed is always optimized for the largest possible oil flow of the individual work functions.



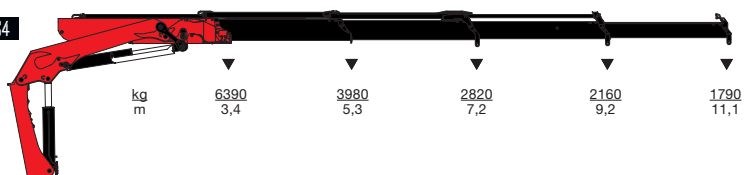
- power to lift



HMF 2310-S3



HMF 2310-S4



▼ Lifting capacity without manual extensions
 ▽ Lifting capacity with manual extensions



- power to lift
HMF Group A/S

Oddervej 200 · DK-8270 Højbjerg
 Tel.: +45 8627 0800 · Fax: +45 8627 0744 · info@hmf.dk

www.hmf.dk

Z008835-06

We reserve the right to introduce improvements and modifications