

# 900-K



- power to lift





LOADING GROUP HC1/B3		900-K1	900-K2	900-K3	900-K4	900-K5
Type				K		
<b>TECHNICAL DATA</b>						
Load moment	tm	8.8	8.5	8.2	8.0	7.7
Hydraulic reach	m	5.5	7.5	9.7	11.8	14.0
Slewing torque	kgm			1325		
Slewing angle	°			420		
Working pressure	bar			300		
Weight excl. stabilizer legs	kg	1000	1105	1205	1295	1375
Weight of stabilizer legs, standard	kg			160		
Pump performance	l/min			40		
Oil tank capacity, separate tank	l			55		
Power consumption	kW			20		
<b>GEOMETRY</b>						
Height above mounting surface	mm			2135		
Width, folded	mm			2350		
Length of crane, no extra valves	mm			747		
Length with 2 extra valves in internal hose reel	m			747		
Dual Power Plus link arm system				Basic		
Over-bending on crane	°			15		
Hook height 1 m from column	m	2.94	2.84	2.74	2.64	2.54
<b>CONTROL MODE</b>						
Manual operation of crane (JS)				Basic		
Manual operation of stabilizer functions				Basic		
Dual control of crane and stabilizer functions				Basic		
Crane operation from stand-up controls				Option		
Operation of the stabilizer legs up/down from the stand-up platform (HS)				Option		
Radio remote control type RC-h				Option		
<b>CONTROLS</b>						
RCL 5300 Safety System				Basic		
Control valve type (-h) for crane operation				Basic		
Control valve type (-h) for operation of stabilizer legs and beams				Basic		
Full working speed in the entire working area				Basic		
<b>OPTIONS: HYDRAULIC EQUIPMENT</b>						
Oil cooler				Option		
High-pressure filter				Option		
Hydraulically extensible stabilizer beam				Option		
Multi-coupling for extra valves in hose guides				Option		
Extra valves in hose guides				Option		
Extra valves in hose reels internally in the jib extensions				Option		
2 or 4 available functions for operating the separate traverse				Option		
Biodegradable oil				Option		
55 l oil tank mounted on the crane				Option		
<b>OTHER EQUIPMENT</b>						
Number of manual extensions			1	1	1	1
EVS stability monitoring system for manually operated cranes				Option		
Work light on crane				Option		
Spotlight on crane operated via radio remote control				Option		
RC-h with joystick (J) or linear control (L)				Option		
ECT 5320 remote control of all functions of the RCL box mounted at the stand-up platform (HS).				Option		
Manual swing-up stabilizer leg with gas spring				Option		



### HMF RCL 5300

The system monitors all safety functions and shows the current load moment on the crane.



### Minimum space requirements

Minimum space requirements give you more space on the truck body - and better economy.



### Dual link arm system

The HMF dual Power Plus link arm system has an excellent lifting capacity at long reach and in high positions as well as it makes it possible to lift a heavy load close to the column.



### Winch

A hydraulic winch provides efficiency for solving of lifting tasks in high positions - also via the Fly-Jib.



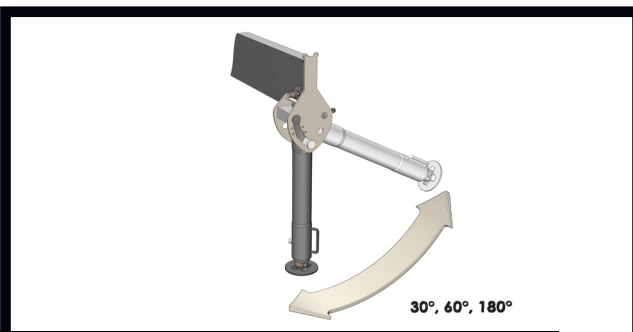
**EVS - active securing of stability**

HMF's patent pending stability safety system, EVS, is continuously taking into account the current load on the vehicle so that crane and truck are in perfect balance. As the system includes the load on the truck body as a part of the tare weight of the vehicle, it means that you actually obtain a considerably larger working area with a load on the truck body - thanks to EVS. This means that you obtain both an extraordinary high level of safety and larger capacity with EVS.



**Corrosion and wear and tear**

All painted surfaces are coated with EQC surface treatment, and all hydraulic pipes are finished with Zistaplex coating. All hydraulic components are coated with a zinc-nickel surface treatment to be able to pass the strict 720 hours salt spray test (EN/ISO 9227 standard), and all parts of stainless steel are corrosion-resistant. This means that all the vital components of the crane comply with corrosion class C4 (marine use), which is an absolute advantage when the crane is driving on the road during winter.



**Adaptable stabilizer solutions**

The stabilizer legs of the crane are to ensure stability - however they still have to be easy to handle and must not take up too much space when not in use. Therefore you can choose between fixed stabilizer legs, manual swing-up stabilizer legs to 30/60° or manual swing-up stabilizer legs to 180° with gas spring. Stabilizer beams can be freely selected as hydraulically extensible or manually extensible and also in connection with the sophisticated EVS stability monitoring system.

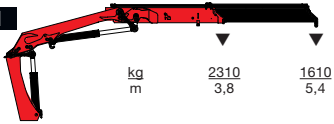


**Stand-up control**

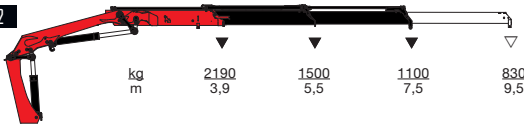
With stand-up control, the crane operator has an increased overview of the crane movements. Especially when loading and unloading the platform body with e.g. grab or pallet fork, the crane operator has the full view of both the platform body and the working area. The crane operator is protected by the HSL or HSL-E safety system which prevents the crane from hitting the operator on the stand-up platform



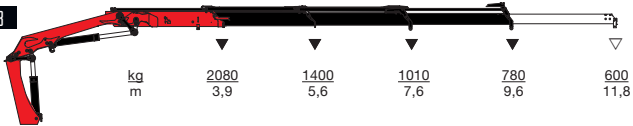
HMF 900-K1



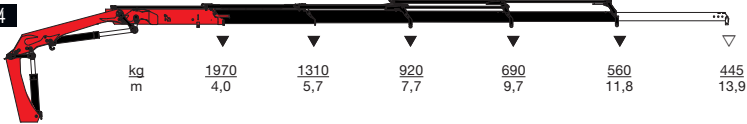
HMF 900-K2



HMF 900-K3



HMF 900-K4



HMF 900-K5



▼ Lifting capacity without manual extensions  
 ▽ Lifting capacity with manual extensions



**- power to lift**  
**HMF Group A/S**

Oddervej 200 · DK-8270 Højbjerg  
 Tel.: +45 8627 0800 · Fax: +45 8627 0744 · info@hmf.dk

[www.hmf.dk](http://www.hmf.dk)

Z008501-01

We reserve the right to introduce improvements and modifications