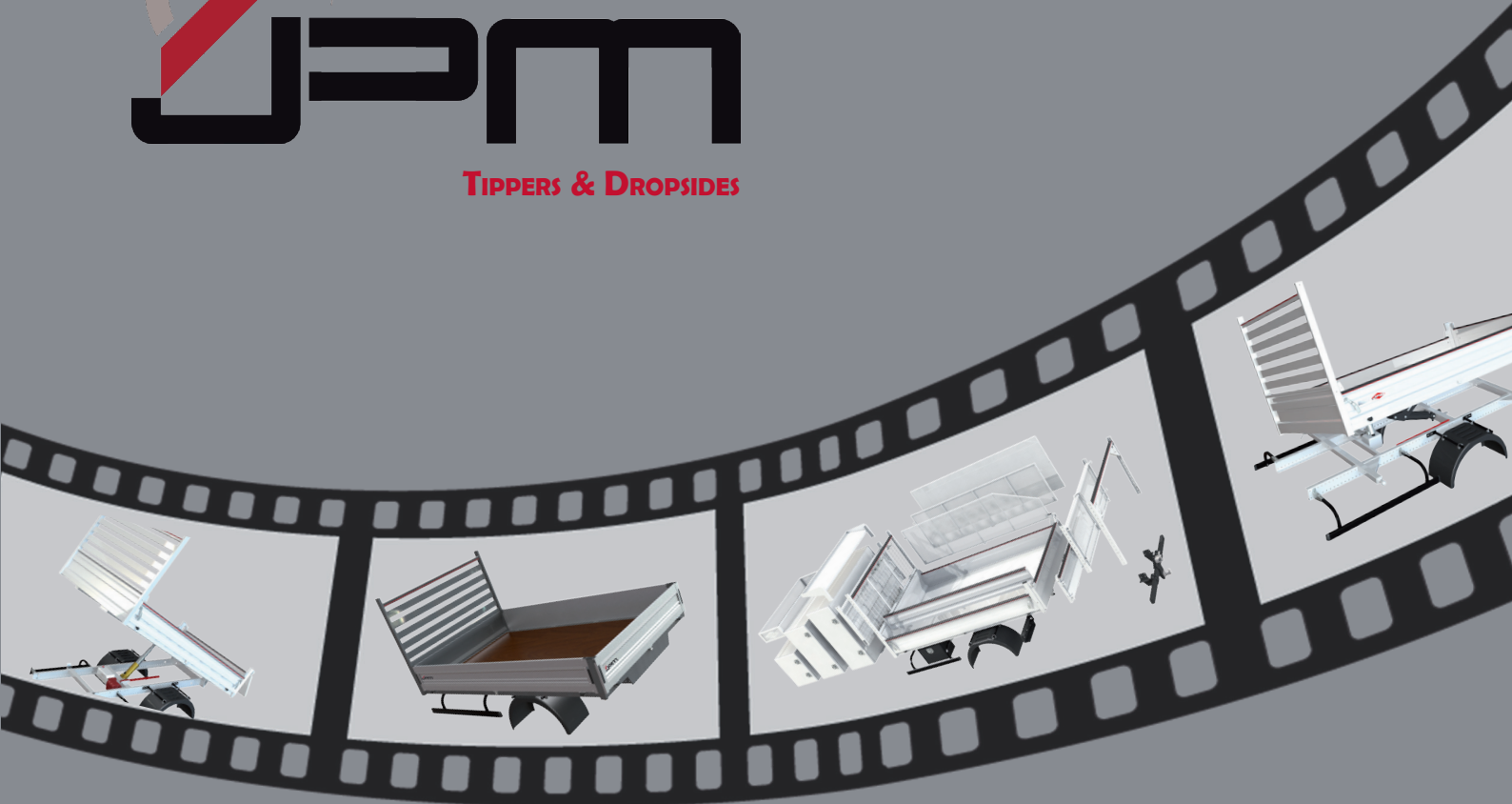




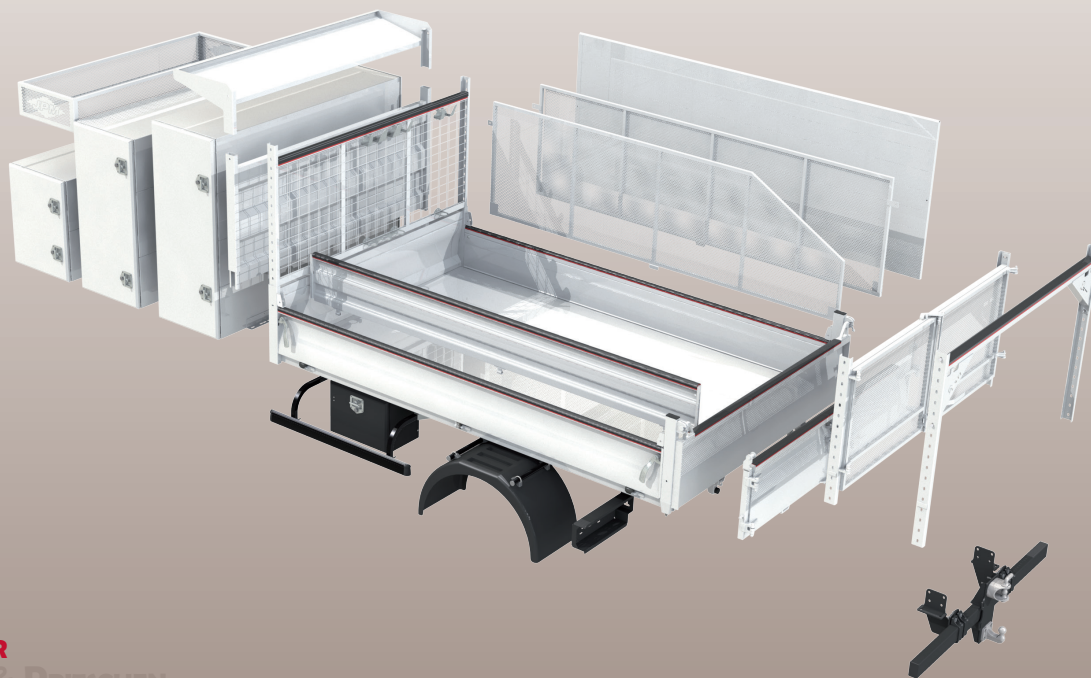
TIPPERS & DROPSIDES



ROBUSTNESS
& LIGHTNESS



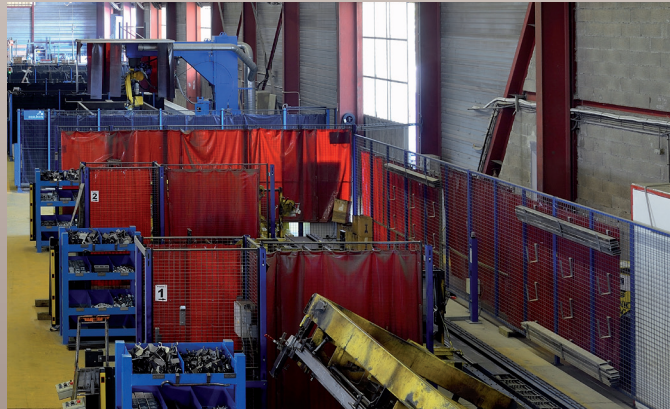
TIPPERS
& DROPSIDES



KIPPER
& PRITSCHEN

Symbol of robustness since a long time, the roots of JPM are located in South West France, an area well-known for its long tradition of forger families.

In the 70s, Jean Paul Massol capitalized on his ancestors' knowledge and craftsmanship to build JPM, a body manufacturer. Over the years, JPM expanded its product range: rear tippers, three-way-tippers, dropsides and removable tippers for commercial vehicles from 3,5T. to 7,5T. The whole range is available in steel and in aluminium, whereupon the latter is more than appreciated, as aluminium products help amongst others to economize fuel and to increase payload thanks to their little own weight.



& COMPANY VALUES



In 2007 JPM was acquired by the current co-CEOs of the company, Jean-Marc Feral and Yves Chevalier. With their strong experiences over 20 years at key positions in international companies, they have decided to bring JPM to a new level of performance and quality. Admiring the German automotive precision and captivated by the new design trends that have started to take place in the conversion industry, they have reshaped the brand and company culture of JPM, which are now summarized in three words: Modern, Elegant and International.

In order to foster its growth, JPM focuses on customer satisfaction and leverages on its dynamic strengths:

- Achievement of excellence throughout human resources management in respecting the environment and having a strongly ethical corporate spirit,
- Industrial organization and automatized manufacturing which integrates the latest innovations of welding and painting process,
- On-going development of body technology in keeping in mind the product qualities set by JPM: robustness, shapely designed, usefulness and reliability,
- Commercialization and services thanks to a dealer network in France and throughout Europe.

- **Manufacturing:** products are costly designed and produced on fully automated lines with a high quality level,
- **Robustness:** dimensional calculations and raw material choices insure overload capability,
- **Shapely designed:** JPM's will is to develop bodies as aesthetic and beautiful as a truck,
- **Usefulness:** consideration of suggestions and wishes of end-user customers,
- **Reliability:** zero stop and no loss of working hours during daily use of our tippers and dropsides,
- **Safety:** all products are tested in the factory before delivery and relevant documents for the vehicle registration in Europe are provided.

Thanks to our know-how and our personal and technical possibilities, we are able to continue the fixed objectives in terms of innovation and success.



TRADE & SERVICES

COOPERATION WITH VEHICLE MANUFACTURERS - DISTRIBUTION PARTNERS THROUGHOUT EUROPE



Mercedes-Benz



IVECO



TOYOTA



PEUGEOT



CITROËN



➤ Distribution partner list available on our website.



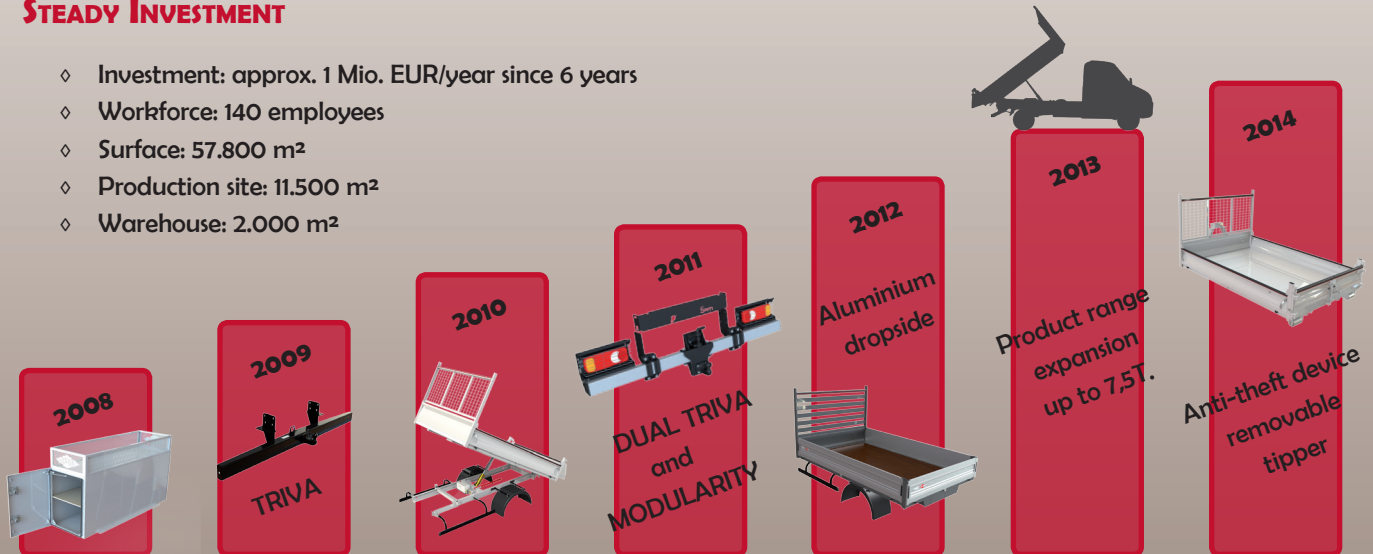
STEADY INNOVATION

- ◇ Engineering department with 8 collaborators
- ◇ Filing of patents and designs every year



STEADY INVESTMENT

- ◇ Investment: approx. 1 Mio. EUR/year since 6 years
- ◇ Workforce: 140 employees
- ◇ Surface: 57.800 m²
- ◇ Production site: 11.500 m²
- ◇ Warehouse: 2.000 m²



FACILITIES

MARKET LEADER IN FRANCE WITH MORE THAN 50% MARKET SHARE

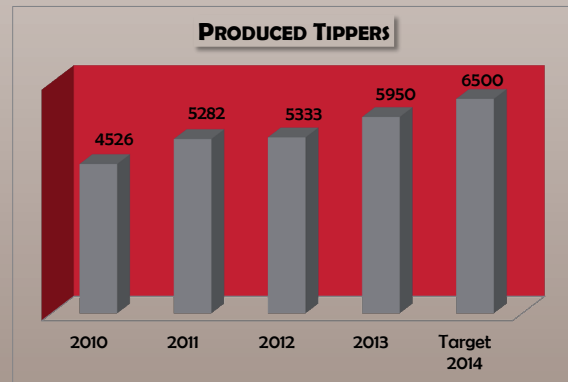


INDUSTRIAL PRODUCTION

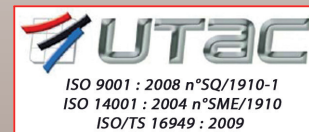
- ◇ 11.500 m² for aluminium and steel processing
- ◇ Conveying powder spray coating facility
- ◇ Several welding robots
- ◇ Automated production planning and control

CUSTOM-MADE PRODUCTION

- ◇ 3.300 m² for custom-made products
- ◇ Qualified workforce

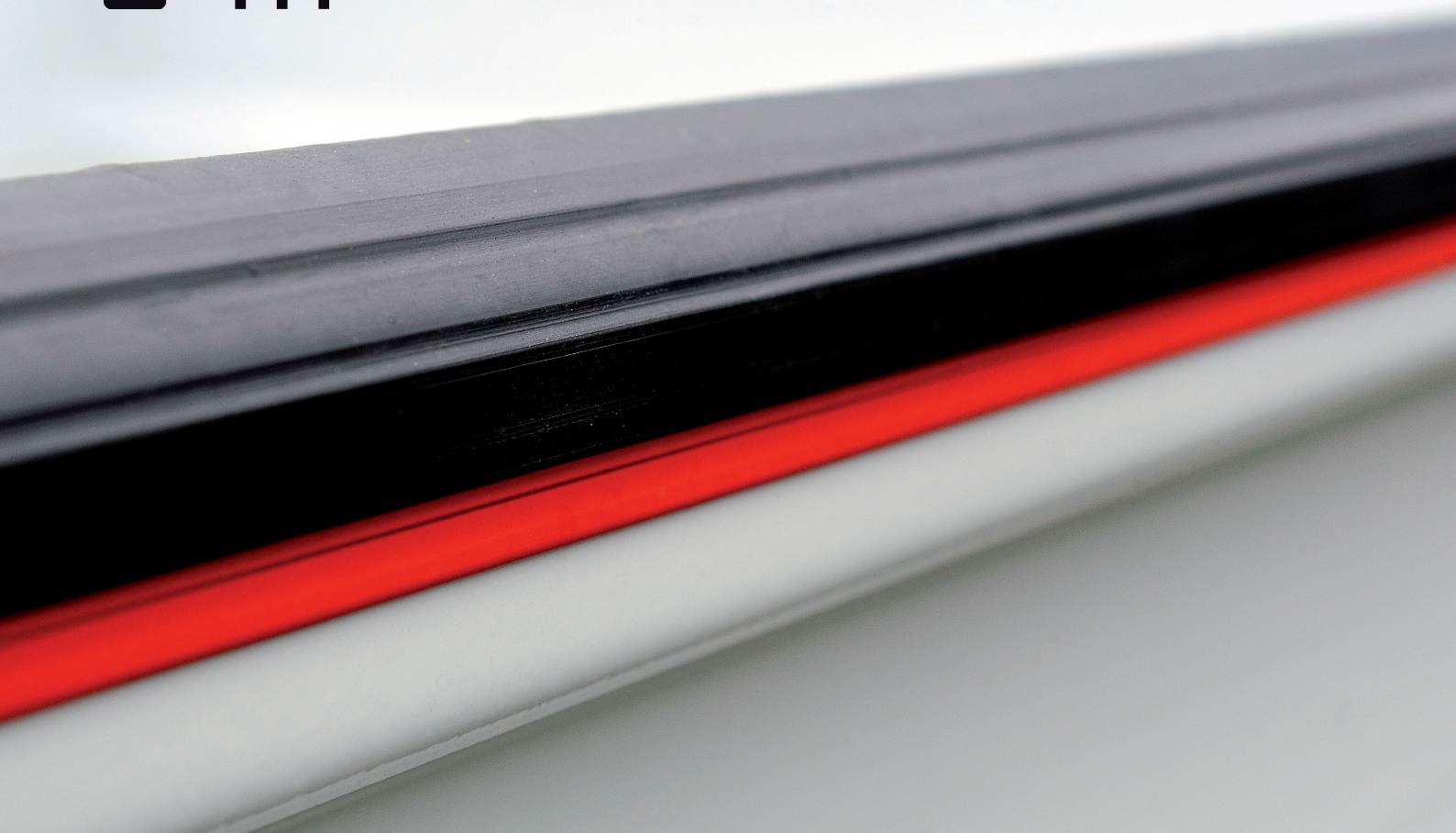


QUALITY & ENVIRONMENT MANAGEMENT SYSTEM



- ◇ UTAC qualified operator:
Certificate HCT/12.N1017-1

LARGE OPTIONS & SPARE PARTS WAREHOUSE



THREE-WAY-TIPPER 10

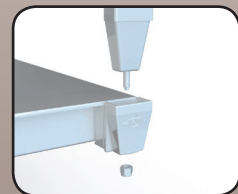
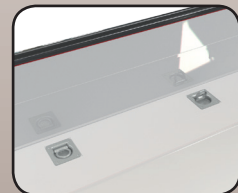
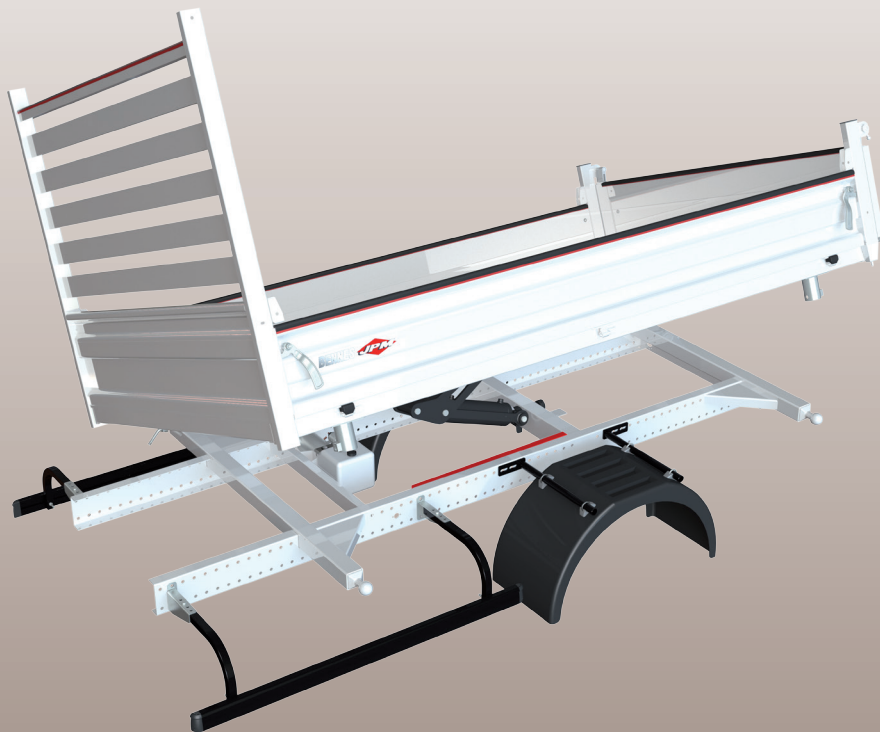
REAR TIPPER 26

REMOVABLE TIPPER 38

DROPSIDE 46

OPTIONS 62

CUSTOM-MADE 84



THREE-WAY-TIPPER

- Tipping through tipping hoist with compass system and high lifting capacity
- Lateral and rear tilting angle approx. 48°
- Tipping speed higher than with a telescopic cylinder and no overlapping of components under subframe

- Sideboards in massive aluminium profiles with ribbed reinforcements, 2.8 mm thick, 400 mm high, fold-down, removable and interchangeable
- Rubber buffer stops on sideboard and rear door hinges, shock-absorbing



- In platform integrated lashing points, according to DIN EN 12640, 800 daN
- Depending on legal standard/country available optionally
- Example: up to length 3.400 mm 6 lashing points, over 3.400 mm 8 lashing points

- Rear corner pillars in steel, cone-shaped, with connecting system and hot-dip galvanized
- Self-adjusting, avoids any backlash
- Removable at any time, ideal to load up bulky goods

Body

- Platform in aluminium profile 5083 H111, 4 mm thick, with reinforcements and tubular side members
- Outer frame adapted to strap tension belts
- Locking-grips integrated in sideboards, available with double safety system
- Aluminium bulkhead, welded, 450 mm high
- Aluminium plank gantry, removable
- Rear door in aluminium, 2.8 mm thick, 450 mm high, automatic opening
- Predisposed sideboard extension gusset plates
- Polypropylene mudguards, black, including cataphoretic dip-coating mudguard brackets
- Side underrun protection in Aluminium, black coated, certified according to safety standards
- Geomet treated bolts (5 times more resistant than galvanizing)

SUBFRAME

- Aluminium subframe, 6 mm thick
- Drilled side members, screwable on vehicle chassis
- Tipping through tipping hoist with compass system
- Electro pump unit with cover, perfect protection, 3L oil tank, pressure: 320 bar
- Remote control in driver's cab, up-/down button

SAFETY

- Safety solenoid valve on cylinder
- Circuit breaker 1.600 watt
- Safety strut
- Tipping through shoring on ball bearings, equipped with foolproof system

FINISH

- Coated kit has total coating thickness of 120 µm: shot-blasting + polyester top coat
- Untreated kit



*according to our warranty terms

THREE-WAY-TIPPER

DIMENSIONS

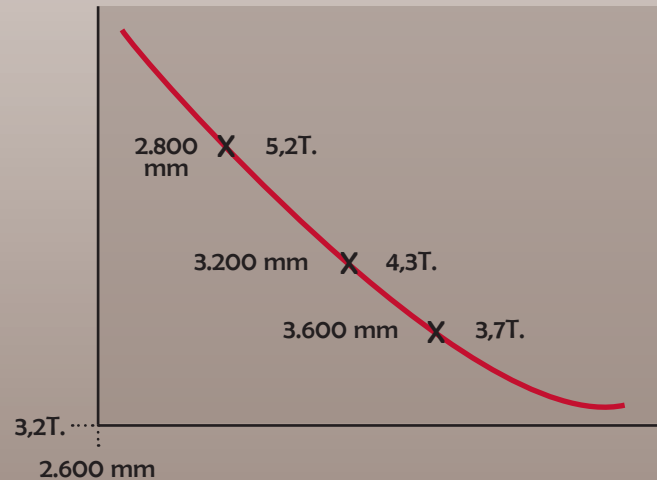
◇ Inside width :	1.800	1.900	2.000	2.100	2.200	mm
◇ Outside width :	1.880	1.980	2.080	2.180	2.280	mm
◇ Inside length :	from 2.160 to 4.160 mm					
◇ Outside length :	from 2.200 to 4.200 mm					

WEIGHT OF KIT

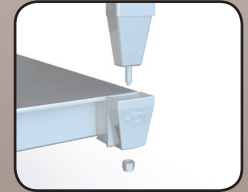
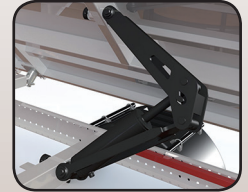
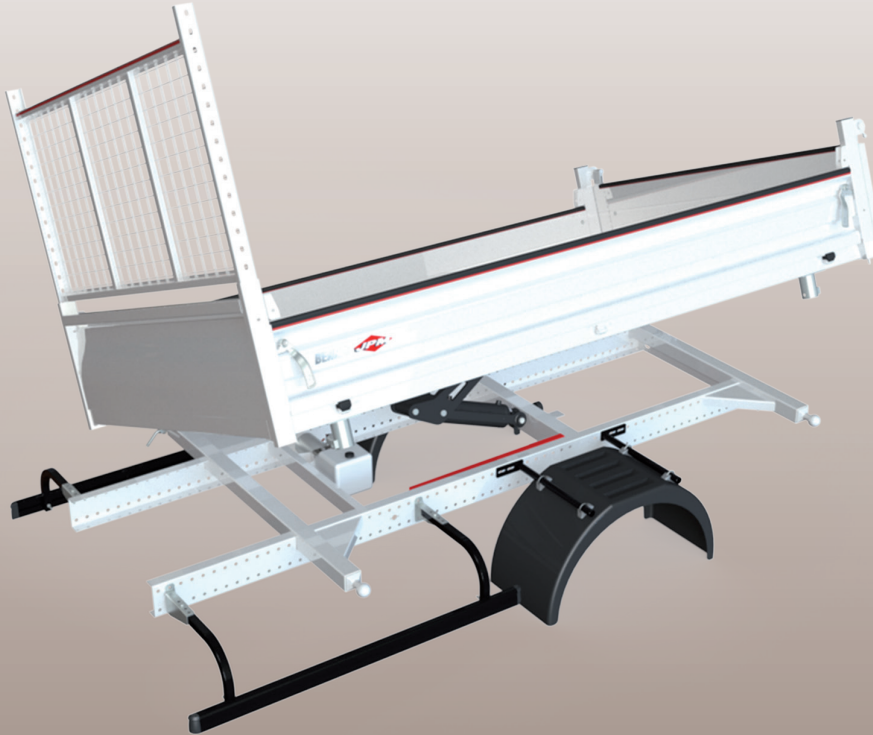
- ◇ 2.800 mm : 410 kg
- ◇ 3.200 mm : 440 kg
- ◇ 3.600 mm : 490 kg
- ◇ 4.000 mm : 520 kg



LIFTING CAPACITY OF TIPPING HOIST



ALUMINIUM THREE-WAY-TIPPER



WITH STEEL SUBFRAME AND GANTRY

- Tipping through tipping hoist with compass system and high lifting capacity
- Lateral and rear tilting angle approx. 48°
- Tipping speed higher than with a telescopic cylinder and no overlapping of components under subframe

- Sideboards in massive aluminium profiles with ribbed reinforcements, 2.8 mm thick, 400 mm high, fold-down, removable and interchangeable
- Rubber buffer stops on sideboard and rear door hinges, shock-absorbing



- In platform integrated lashing points, according to DIN EN 12640, 800 daN
- Depending on legal standard/country available optionally
- Example: up to length 3.400 mm 6 lashing points, over 3.400 mm 8 lashing points

- Rear corner pillars in steel, cone-shaped, with connecting system and hot-dip galvanized
- Self-adjusting, avoids any backlash
- Removable at any time, ideal to load up bulky goods

ALUMINIUM THREE-WAY-TIPPER

Body

- Platform in aluminium profile 5083 H111, 4 mm thick, with reinforcements and tubular side members
- Outer frame adapted to strap tension belts
- Locking-grips integrated in sideboards, available with double safety system
- Aluminium bulkhead, welded, 450 mm high
- Steel wire mesh gantry, 4 mm, removable and hot-dip galvanized
- Rear door in aluminium, 2.8 mm thick, 450 mm high, automatic opening
- Predisposed sideboard extension gusset plates
- Polypropylene mudguards, black, including cataphoretic dip-coating mudguard brackets
- Side underrun protection in Aluminium, black coated, certified according to safety standards
- Geomet treated bolts (5 times more resistant than galvanizing)

Subframe

- Steel subframe S355, 4 and 5 mm thick
- Drilled side members, screwable on vehicle chassis
- Tipping through tipping hoist with compass system
- Electro pump unit with cover, perfect protection, 3L oil tank, pressure: 320 bar
- Remote control in driver's cab, up-/down button

Safety

- Safety solenoid valve on cylinder
- Circuit breaker 1.600 watt and safety strut
- Tipping through shoring on ball bearings, equipped with foolproof system

Finish

- Coated kit has total coating thickness of 120 µm: shot-blasting + polyester top coat
- Untreated kit, optionally available with hot-dip galvanized subframe



WITH STEEL SUBFRAME AND GANTRY

DIMENSIONS

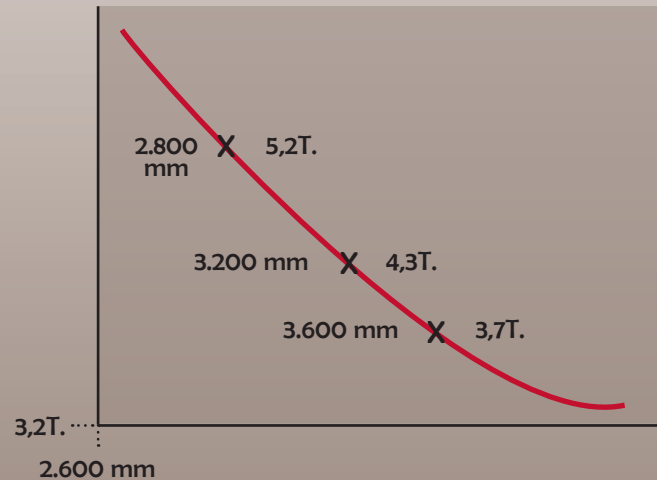
◇ Inside width :	1.800	1.900	2.000	2.100	2.200	mm
◇ Outside width :	1.880	1.980	2.080	2.180	2.280	mm
◇ Inside length :	from 2.160 to 4.160 mm					
◇ Outside length :	from 2.200 to 4.200 mm					

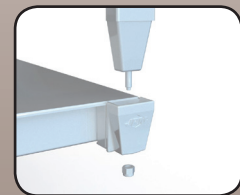
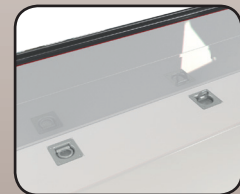
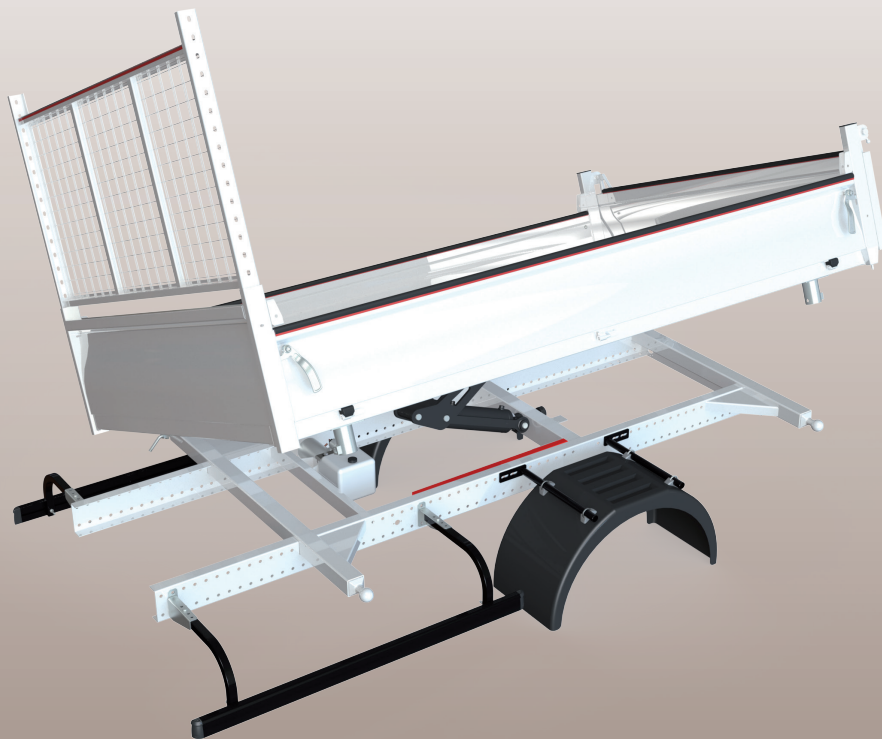
WEIGHT OF KIT

- ◇ 2.800 mm : 424 kg
- ◇ 3.200 mm : 456 kg
- ◇ 3.600 mm : 505 kg
- ◇ 4.000 mm : 540 kg



LIFTING CAPACITY OF TIPPING HOIST





THREE-WAY-TIPPER

- Tipping through tipping hoist with compass system and high lifting capacity
- Lateral and rear tilting angle approx. 48°
- Tipping speed higher than with a telescopic cylinder and no overlapping of components under subframe

- Double-walled sideboards in steel S355, 2 mm thick, non-stop laser welded, 350 mm high, fold-down, removable and interchangeable. Smooth steel profiles perfect for advertising.
- Aluminium sideboards 400 mm high are available optionally

- In platform integrated lashing points, according to DIN EN 12640, 800 daN
- Depending on legal standard/country available optionally
- Example: up to length 3.400 mm 6 lashing points, over 3.400 mm 8 lashing points

- Rear corner pillars in steel, cone-shaped, with connecting system and hot-dip galvanized
- Self-adjusting, avoids any backlash
- Removable at any time, ideal to load up bulky goods

Body

- Platform in steel profile HX500, 3 mm thick, with reinforcements and tubular side members
- Outer frame adapted to strap tension belts
- Locking-grips integrated in sideboards, available with double safety system
- Rubber buffer stops on sideboard and rear door hinges, shock-absorbing
- Steel bulkhead S355, welded, 2 mm thick, 450 mm high
- Steel wire mesh gantry, 4 mm, removable and hot-dip galvanized
- Rear door in steel S355, 2 mm thick, 450 mm high, automatic opening
- Predisposed sideboard extension gusset plates
- Polypropylene mudguards, black, including cataphoretic dip-coating mudguard brackets
- Side underrun protection in Aluminium, black coated, certified according to safety standards
- Geomet treated bolts (5 times more resistant than galvanizing)

Subframe

- Steel subframe S355, 4 and 5 mm thick
- Drilled side members, screwable on vehicle chassis
- Tipping through tipping hoist with compass system
- Electro pump unit with cover, perfect protection, 3L oil tank, pressure: 320 bar
- Remote control in driver's cab, up-/down button

Safety

- Safety solenoid valve on cylinder
- Circuit breaker 1.600 watt and safety strut
- Tipping through shoring on ball bearings, equipped with foolproof system

Finish

- Total coating thickness 120 µm / 1.200 h salt spray
- Shot-blasting + anticorrosive coating + polyester top coat applied separately on each component
- Seals between non seam-welded components

THREE-WAY-TIPPER

DIMENSIONS

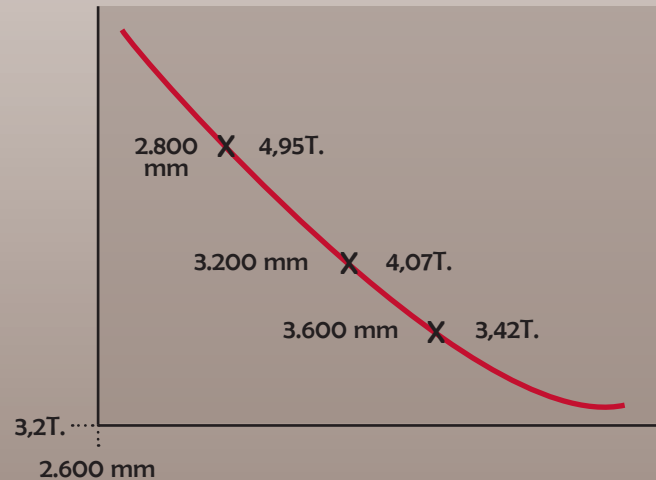
◇ Inside width :	1.800	1.900	2.000	2.100	2.200	mm
◇ Outside width :	1.880	1.980	2.080	2.180	2.280	mm
◇ Inside length :	from 2.160 to 4.160 mm					
◇ Outside length :	from 2.200 to 4.200 mm					

WEIGHT OF KIT

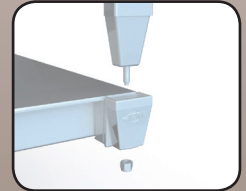
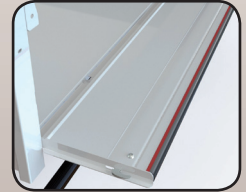
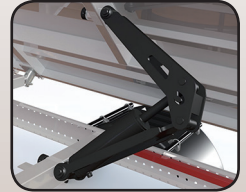
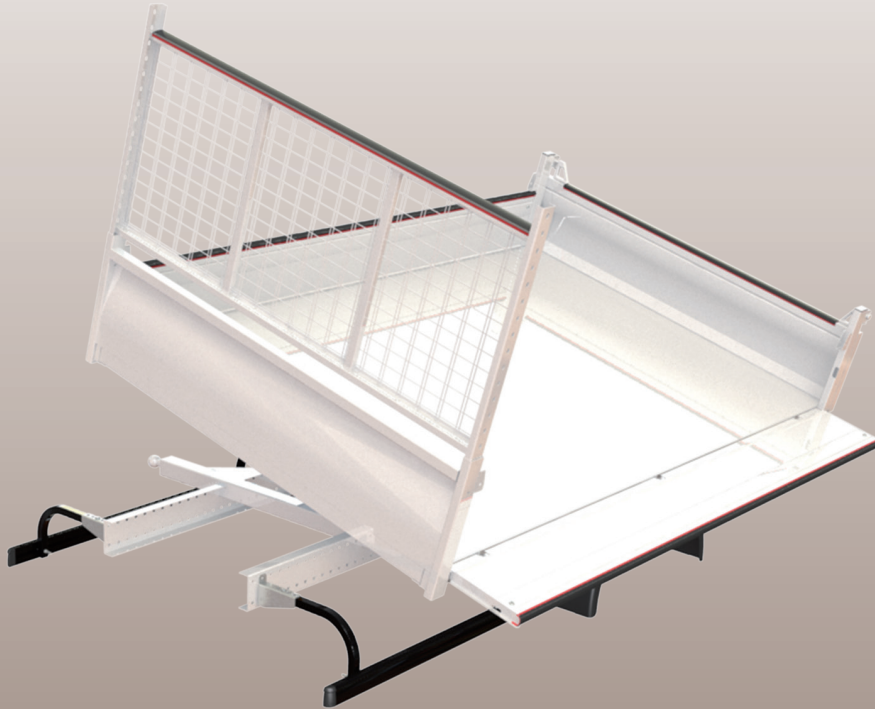
- ◇ 2.800 mm : 598 kg
- ◇ 3.200 mm : 662 kg
- ◇ 3.600 mm : 746 kg
- ◇ 4.000 mm : 830 kg



LIFTING CAPACITY OF TIPPING HOIST



STEEL THREE-WAY-TIPPER



WITH 90° SIDEBOARD LOCKING

- Tipping through tipping hoist with compass system and high lifting capacity
- Lateral and rear tilting angle approx. 48°
- Tipping speed higher than with a telescopic cylinder and no overlapping of components under subframe

- Double-walled sideboards in steel S355, 2 mm thick, non-stop laser welded, 350 mm high, fold-down, removable and interchangeable. Smooth steel profiles perfect for advertising.
- Sideboards open to 90° and 180° thanks to special hinges as well as mechanical locking to 90°

- In platform integrated lashing points, according to DIN EN 12640, 800 daN
- Depending on legal standard/country available optionally
- Example: up to length 3.400 mm 6 lashing points, over 3.400 mm 8 lashing points

- Rear corner pillars in steel, cone-shaped, with connecting system and hot-dip galvanized
- Self-adjusting, avoids any backlash
- Removable at any time, ideal to load up bulky goods

STEEL THREE-WAY-TIPPER

Body

- Platform in steel profile HX500, 3 mm thick, with reinforcements and tubular side members
- Outer frame adapted to strap tension belts
- Locking-grips integrated in sideboards, available with double safety system
- Rubber buffer stops on sideboard and rear door hinges, shock-absorbing
- Steel bulkhead S355, welded, 2 mm thick, 450 mm high
- Steel wire mesh gantry, 4 mm, removable and hot-dip galvanized
- Rear door in steel S355, 2 mm thick, 450 mm high, automatic opening
- Predisposed sideboard extension gusset plates
- Polypropylene mudguards, black, including cataphoretic dip-coating mudguard brackets
- Side underrun protection in Aluminium, black coated, certified according to safety standards
- Geomet treated bolts (5 times more resistant than galvanizing)

Subframe

- Steel subframe S355, 4 and 5 mm thick
- Drilled side members, screwable on vehicle chassis
- Tipping through tipping hoist with compass system
- Electro pump unit with cover, perfect protection, 3L oil tank, pressure: 320 bar
- Remote control in driver's cab, up-/down button

Safety

- Safety solenoid valve on cylinder
- Circuit breaker 1.600 watt and safety strut
- Tipping through shoring on ball bearings, equipped with foolproof system

Finish

- Total coating thickness 120 µm / 1.200 h salt spray
- Shot-blasting + anticorrosive coating + polyester top coat applied separately on each component
- Seals between non seam-welded components

WITH 90° SIDEBORD LOCKING

DIMENSIONS

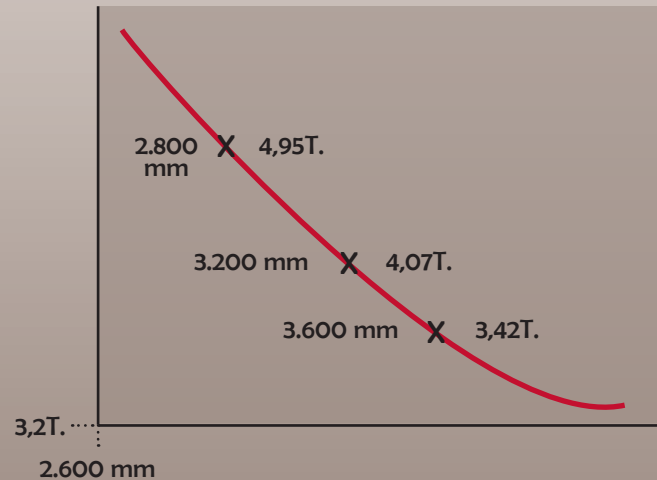
◇ Inside width :	1.800	1.900	2.000	2.100	2.200	mm
◇ Outside width :	1.880	1.980	2.080	2.180	2.280	mm
◇ Inside length :	from 2.160 to 4.160 mm					
◇ Outside length :	from 2.200 to 4.200 mm					

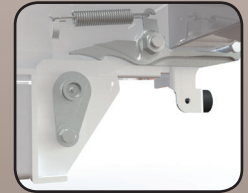
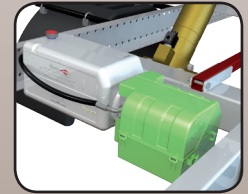
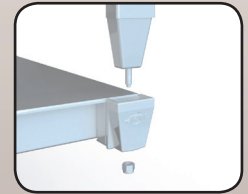
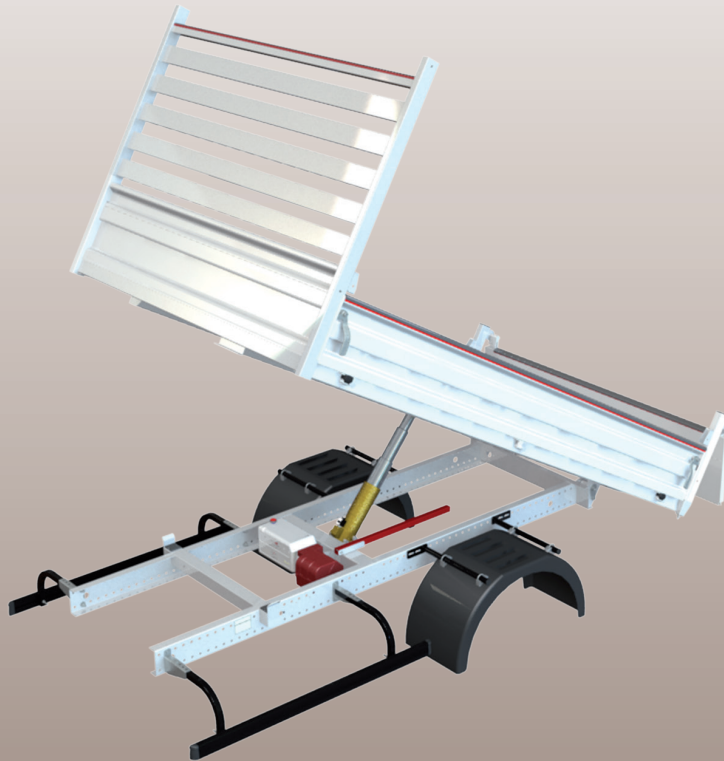
WEIGHT OF KIT

- ◇ 2.800 mm : 598 kg
- ◇ 3.200 mm : 662 kg
- ◇ 3.600 mm : 746 kg
- ◇ 4.000 mm : 830 kg



LIFTING CAPACITY OF TIPPING HOIST





REAR TIPPER

- Sideboards in massive aluminium profiles with ribbed reinforcements, 2.8 mm thick, 350 mm high, fold-down, removable and interchangeable
- Rubber buffer stops on sideboard and rear door hinges, shock-absorbing

- Rear corner pillars in steel, cone-shaped, with connecting system and hot-dip galvanized
- Self-adjusting, avoids any backlash
- Removable at any time, perfect to load up bulky goods

- Cover for electro pump unit
- Perfect protection for an optimal resistance to weathering
- Biodegradable oil available optionally

- Rear door in aluminium, 2.8 mm thick, 450 mm high
- Automatic opening when tipping with rear door oscillating at the top

Body

- Platform in aluminium profile 5083 H111, 4 mm thick, with reinforcements and tubular side members
- Dumping shaft at tail with sealed-for-life bearings
- Outer frame adapted to strap tension belts
- Locking-grips integrated in sideboards, available with double safety system
- Aluminium bulkhead, welded, 450 mm high
- Aluminium plank gantry, removable
- Predisposed sideboard extension gusset plates
- Polypropylene mudguards, black, including cathaphoretic dip-coating mudguard brackets
- Side underrun protection in Aluminium, black coated, certified according to safety standards
- Geomet treated bolts (5 times more resistant than galvanizing)
- Lashing points in platform available optionally

SUBFRAME

- Aluminium subframe, 6 mm thick
- Drilled side members, screwable on vehicle chassis
- Tipping through telescopic cylinder, tilting angle approx. 48°
- Electro pump unit, 7L oil tank, pressure: 180 bar
- Remote control in driver's cab, up-/down button

SAFETY

- Safety solenoid valve on cylinder
- Circuit breaker 1.600 watt
- Safety strut

FINISH

- Coated kit has a total coating thickness of 120 µm
- Shot-blasting
- Polyester top coat applied separately on each component
- Untreated kit

REAR TIPPER

DIMENSIONS

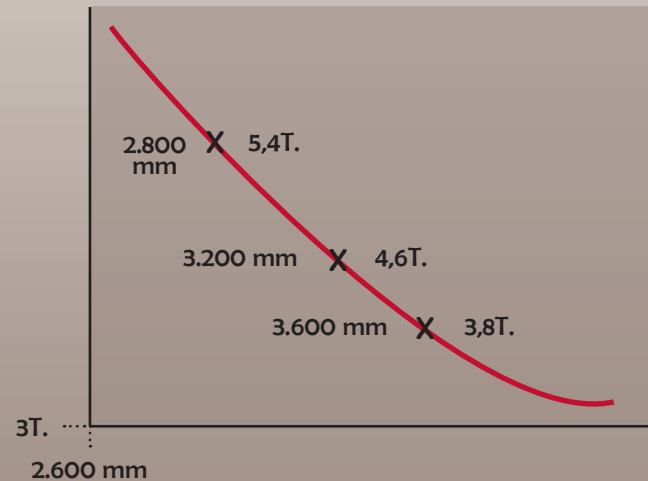
◇ Inside width :	1.800	1.900	2.000	2.100	2.200	mm
◇ Outside width :	1.880	1.980	2.080	2.180	2.280	mm
◇ Inside length :	from 2.160 to 4.160 mm					
◇ Outside length :	from 2.200 to 4.200 mm					

WEIGHT OF KIT

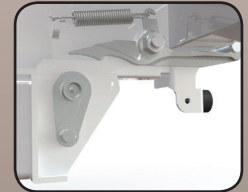
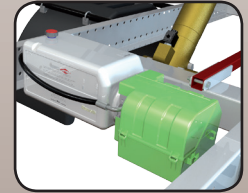
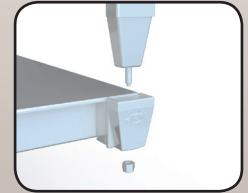
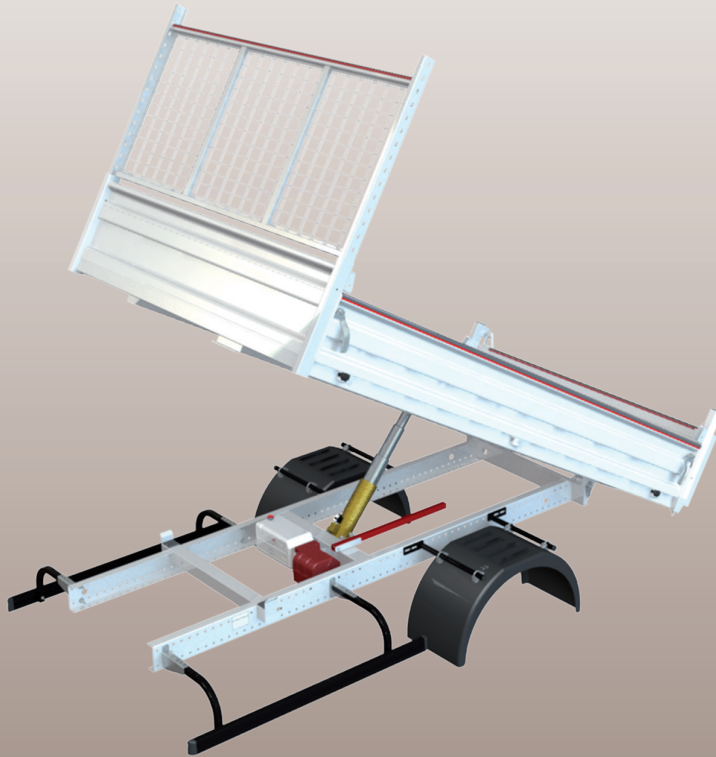
- ◇ 2.800 mm : 330 kg
- ◇ 3.200 mm : 360 kg
- ◇ 3.600 mm : 390 kg
- ◇ 4.000 mm : 420 kg



LIFTING CAPACITY OF TELESCOPIC CYLINDER



ALUMINIUM REAR TIPPER



WITH STEEL SUBFRAME AND GANTRY

- Sideboards in massive aluminium profiles with ribbed reinforcements, 2.8 mm thick, 350 mm high, fold-down, removable and interchangeable
- Rubber buffer stops on sideboard and rear door hinges, shock-absorbing

- Rear corner pillars in steel, cone-shaped, with connecting system and hot-dip galvanized
- Self-adjusting, avoids any backlash
- Removable at any time, perfect to load up bulky goods

- Cover for electro pump unit
- Perfect protection for an optimal resistance to weathering
- Biodegradable oil available optionally

- Rear door in aluminium, 2.8 mm thick, 450 mm high
- Automatic opening when tipping with rear door oscillating at the top

ALUMINIUM REAR TIPPER

Body

- Platform in aluminium profile 5083 H111, 4 mm thick, with reinforcements and tubular side members
- Dumping shaft at tail with sealed-for-life bearings
- Outer frame adapted to strap tension belts
- Locking-grips integrated in sideboards, available with double safety system
- Aluminium bulkhead, welded, 450 mm high
- Steel wire mesh gantry, 4 mm, removable and hot-dip galvanized
- Predisposed sideboard extension gusset plates
- Polypropylene mudguards, black, including cataphoretic dip-coating mudguard brackets
- Side underrun protection in Aluminium, black coated, certified according to safety standards
- Geomet treated bolts (5 times more resistant than galvanizing)
- Lashing points in platform available optionally

SUBFRAME

- Steel subframe S355, 4 and 5 mm thick
- Drilled side members, screwable on vehicle chassis
- Tipping through telescopic cylinder, tilting angle approx. 48°
- Electro pump unit, 7L oil tank, pressure: 180 bar
- Remote control in driver's cab, up-/down button

SAFETY

- Safety solenoid valve on cylinder
- Circuit breaker 1.600 watt
- Safety strut

FINISH

- Coated kit has a total coating thickness of 120 µm
- Shot-blasting
- Polyester top coat supplied separately on each component
- Untreated kit, optionally available with hot-dip galvanized subframe

WITH STEEL SUBFRAME AND GANTRY

DIMENSIONS

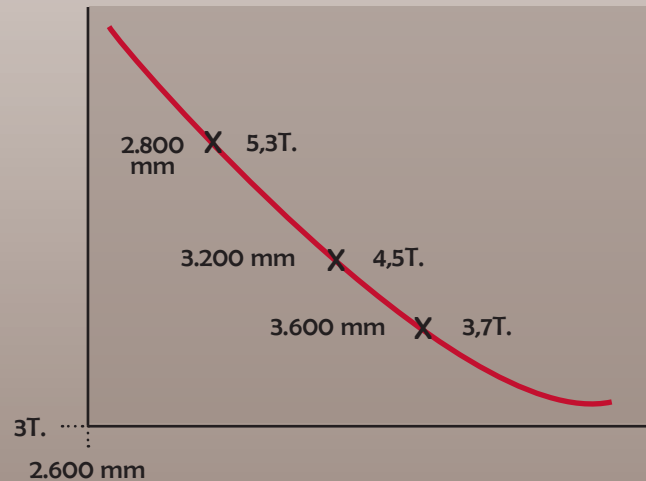
◇ Inside width :	1.800	1.900	2.000	2.100	2.200	mm
◇ Outside width :	1.880	1.980	2.080	2.180	2.280	mm
◇ Inside length :	from 2.160 to 4.160 mm					
◇ Outside length :	from 2.200 to 4.200 mm					

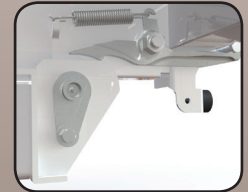
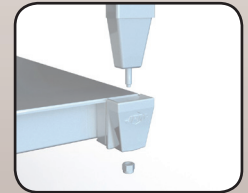
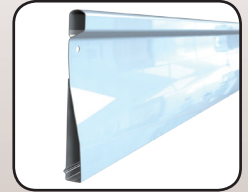
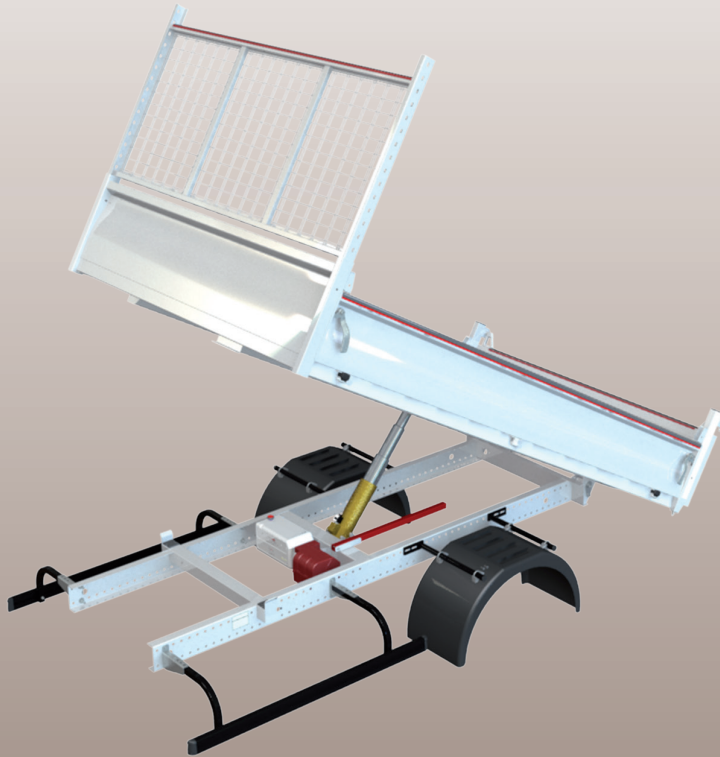
WEIGHT OF KIT

- ◇ 2.800 mm : 369 kg
- ◇ 3.200 mm : 400 kg
- ◇ 3.600 mm : 431 kg
- ◇ 4.000 mm : 462 kg



LIFTING CAPACITY OF TELESCOPIC CYLINDER





REAR TIPPER

- Double-walled sideboards in steel S355, 2 mm thick, non-stop laser welded, 350 mm high, fold-down, removable and interchangeable.
- Smooth steel profiles perfect for advertising.

- Rear corner pillars in steel, cone-shaped, with connecting system and hot-dip galvanized
- Self-adjusting, avoids any backlash
- Removable at any time, perfect to load up bulky goods

- Cover for electro pump unit
- Perfect protection for an optimal resistance to weathering
- Biodegradable oil available optionally

- Rear door in steel S355, 2 mm thick, 450 mm high
- Automatic opening when tipping with rear door oscillating at the top

Body

- Platform in steel profile HX500, 3 mm thick, with reinforcements and tubular side members
- Dumping shaft at tail with sealed-for-life bearings
- Outer frame adapted to strap tension belts
- Locking-grips integrated in sideboards, available with double safety system
- Rubber buffer stops on sideboard and rear door hinges, shock-absorbing
- Steel bulkhead S355, welded, 2 mm thick, 450 mm high
- Steel wire mesh gantry, 4 mm, removable and hot-dip galvanized
- Predisposed sideboard extension gusset plates
- Polypropylene mudguards, black, including cataphoretic dip-coating mudguard brackets
- Side underrun protection in Aluminium, black coated, certified according to safety standards
- Geomet treated bolts (5 times more resistant than galvanizing)
- Lashing points in platform available optionally

Subframe

- Steel subframe S355, 4 and 5 mm thick
- Drilled side members, screwable on vehicle chassis
- Tipping through telescopic cylinder, tilting angle approx. 48°
- Electro pump unit, 7L oil tank, pressure: 180 bar
- Remote control in driver's cab, up-/down button

Safety

- Safety solenoid valve on cylinder
- Circuit breaker 1.600 watt
- Safety strut

Finish

- Total coating thickness 120 µm / 1.200 h salt spray
- Shot-blasting
- Anticorrosive coating + polyester top coat applied separately on each component
- Seals between non seam-welded components

REAR TIPPER

DIMENSIONS

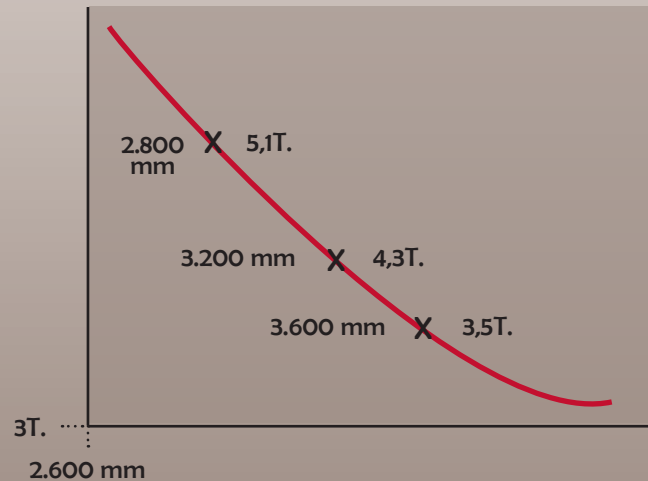
◇ Inside width :	1.800	1.900	2.000	2.100	2.200	mm
◇ Outside width :	1.880	1.980	2.080	2.180	2.280	mm
◇ Inside length :	from 2.160 to 4.160 mm					
◇ Outside length :	from 2.200 to 4.200 mm					

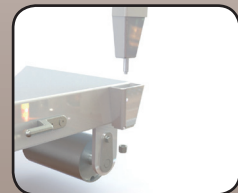
WEIGHT OF KIT

- ◇ 2.800 mm : 572 kg
- ◇ 3.200 mm : 628 kg
- ◇ 3.600 mm : 684 kg
- ◇ 4.000 mm : 740 kg



LIFTING CAPACITY OF TELESCOPIC CYLINDER





REMOVABLE TIPPER

SAFETY

- Gripper axis in steel with anti-theft device, 30 mm diameter, welded on steel profile and bolted on structure
- Rear door in aluminium, 2.8 mm thick, 450 mm high
- Double-winged opening
- Sideboards in massive aluminium profiles with ribbed reinforcements, 2.8 mm thick, 350 mm high, fold-down, removable and interchangeable
- Rear corner pillars in steel, cone-shaped, with connecting system and hot-dip galvanized
- Self-adjusting, avoids any backlash
- Removable at any time, perfect to load up bulky goods

Body

- Platform in aluminium profile 5083 H111, 4 mm thick, with U-shaped reinforced side members, every 350 mm
- Outer frame adapted to strap tension belts
- Locking-grips integrated in sideboards, available with double safety system
- Rubber buffer stops on sideboard hinges, shock-absorbing
- Aluminium bulkhead, welded, 450 mm high
- Steel wire mesh gantry, 4 mm, removable and hot-dip galvanized
- Predisposed sideboard extension gusset plates
- Rear rolls in hot-dip galvanized steel
- Lashing points in platform available optionally

CRADLE

- Z-shaped side members, 158 mm high, 8 mm thick
- Centre distance 850 or 1060
- Shackle height 920 mm

FINISH

- Coated kit has a total coating thickness of 120 µm
- Shot-blasting
- Polyester top coat supplied separately on each component
- Untreated kit

REMOVABLE TIPPER

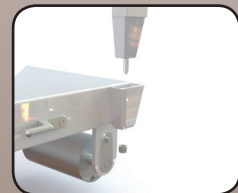
DIMENSIONS

◇ Inside width :	1.800	2.000	mm
◇ Outside width :	1.880	2.080	mm
◇ Inside length :	from 2.160 to 3.960 mm		
◇ Outside length :	from 2.200 to 4.000 mm		

WEIGHT OF KIT

- ◇ 3.200 mm : 288 kg
- ◇ 3.500 mm : 315 kg





REMOVABLE TIPPER

SAFETY

- Gripper axis in steel with anti-theft device, 30 mm diameter, welded on steel profile 120 x 60 mm
- Rear door in steel S355, 2 mm thick, 450 mm high
- Double-winged opening or oscillating at the top with manual operation
- Double-walled sideboards in steel S355, 2 mm thick, non-stop laser welded, 350 mm high, fold-down, removable and interchangeable
- Smooth steel profiles perfect for advertising
- Rear corner pillars in steel, cone-shaped, with connecting system and hot-dip galvanized
- Self-adjusting, avoids any backlash
- Removable at any time, perfect to load up bulky goods

Body

- Platform in steel profile HX500, 3 mm thick, with reinforcements and tubular side members
- Outer frame adapted to strap tension belts
- Locking-grips integrated in sideboards, available with double safety system
- Rubber buffer stops on sideboard hinges, shock-absorbing
- Steel bulkhead S355, welded, 2 mm thick, 450 mm high
- Steel wire mesh gantry, 4 mm, removable and hot-dip galvanized
- Predisposed sideboard extension gusset plates
- Rear rolls in hot-dip galvanized steel
- Lashing points in platform available optionally

CRADLE

- Side members in IPE 140
- Centre distance 850 or 1060
- Shackle height 920 mm

FINISH

- Total coating thickness 120 μm / 1.200 h salt spray
- Shot-blasting
- Anticorrosive coating + polyester top coat applied separately on each component
- Seals between non seam-welded components

REMOVABLE TIPPER

DIMENSIONS

◇ Inside width :	1.800	2.000	mm
◇ Outside width :	1.880	2.080	mm
◇ Inside length :	from 2.160 to 3.960 mm		
◇ Outside length :	from 2.200 to 4.000 mm		

WEIGHT OF KIT

◇ 3.200 mm :	510 kg
◇ 3.500 mm :	558 kg

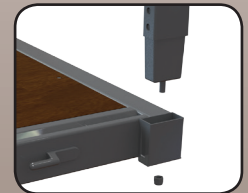
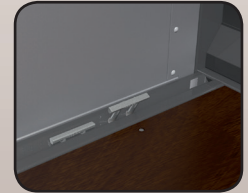




ALUMINIUM DROPSIDE WITH WOOD PLATFORM



**PAYLOAD
UP TO
4.000 KG**



AND ANODIZED SIDEBOARDS



- Light dropside with high payload and moreover robust
- Maximum payload of 4.000 kg (the actual vehicle load capacity is relevant) TÜV tested according to DIN EN 12642 Code L



- Lashing points integrated in platform, retractable, hot-dip galvanized steel, approx. every 850 mm
- Load securing TÜV tested according to DIN EN 12640

- Structure height from subframe until platform: 225 mm
- Very compact dropside

- Rear corner pillars in aluminium, with connecting system
- Self-adjusting, avoids any backlash
- Removable at any time, ideal to load up bulky goods

ALUMINIUM DROPSIDE WITH WOOD PLATFORM

Body

- Aluminium side members, 4 mm thick
- Aluminium structure, 3 mm thick
- Aluminium cross members under platform, 60 mm thick
- Multilayer wood platform, 15 mm thick, treated with phenolic resin, water-resistant, anti-skid surface
- Outer frame adapted to strap tension belts
- Aluminium bulkhead, welded, 450 mm high
- Aluminium plank gantry, removable
- Anodized aluminium sideboards and rear door, 25 mm thick, 400 mm high, fold-down, removable and interchangeable
- Locking-grips integrated in sideboards
- Rubber buffer stops on sideboard and rear door hinges, shock-absorbing
- Polypropylene mudguards, black, including cathaphoretic dip-coating mudguard brackets
- Side underrun protection in Aluminium, black coated, certified according to safety standards
- Geomet treated bolts (5 times more resistant than galvanizing)

FINISH

- Coated kit has a total coating thickness of 120 µm
- Shot-blasting
- Polyester top coat supplied separately on each component
- Untreated kit

AND ANODIZED SIDEBOARDS

DIMENSIONS

◇ Inside width :	1.820	1.920	2.020	2.120	2.220	mm
◇ Outside width :	1.880	1.980	2.080	2.180	2.280	mm
◇ Inside length :	from 2.160 to 4.560 mm					
◇ Outside length :	from 2.250 to 4.650 mm					

WEIGHT OF KIT

- ◇ 3.300 mm : 220 kg
- ◇ 4.000 mm : 255 kg
- ◇ 4.600 mm : 285 kg



LOAD SECURING DIN EN 12640

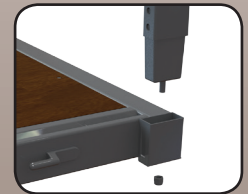
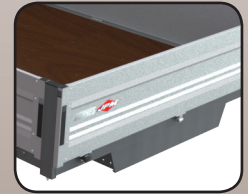
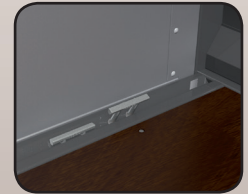
ROBUSTNESS DIN EN 12642 CODE L



STEEL DROPSIDE WITH WOOD PLATFORM



**PAYLOAD
UP TO
4.000 KG**



AND ANODIZED ALUMINIUM SIDEBOARDS



- Maximum payload of 4.000 kg (the actual vehicle load capacity is relevant) TÜV tested according to DIN EN 12642 Code L
- Robustness



- Lashing points integrated in platform, retractable, hot-dip galvanized steel, approx. every 850 mm
- Load securing TÜV tested according to DIN EN 12640

- Structure height from subframe until platform: 225 mm
- Very compact dropside

- Rear corner pillars in steel, with connecting system and hot-dip galvanized
- Self-adjusting, avoids any backlash
- Removable at any time, ideal to load up bulky goods

STEEL DROPSIDE WITH WOOD PLATFORM

Body

- Side members in steel S355, 3 mm thick
- Structure in steel S250D, 2 mm thick, galvanized
- Steel cross members under platform, 60 mm thick, galvanized
- Multilayer wood platform, 15 mm thick, treated with phenolic resin, water-resistant, anti-skid surface
- Outer frame adapted to strap tension belts
- Steel bulkhead S355, welded, 2 mm thick, 450 mm high
- Steel wire mesh gantry, 4 mm, removable and hot-dip galvanized
- Anodized aluminium sideboards and rear door, 25 mm thick, 400 mm high, fold-down, removable and interchangeable
- Locking-grips integrated in sideboards
- Rubber buffer stops on sideboard and rear door hinges, shock-absorbing
- Polypropylene mudguards, black, including cathaphoretic dip-coating mudguard brackets
- Side underrun protection in Aluminium, black coated, certified according to safety standards
- Geomet treated bolts (5 times more resistant than galvanizing)

FINISH

- Total coating thickness 120 µm / 1.200 h salt spray
- Shot-blasting
- Anticorrosive coating + polyester top coat applied separately on each component
- Seals between non seam-welded components

AND ANODIZED ALUMINIUM SIDEBOARDS

DIMENSIONS

◇ Inside width :	1.820	1.920	2.020	2.120	2.220	mm
◇ Outside width :	1.880	1.980	2.080	2.180	2.280	mm
◇ Inside length :	from 2.160 to 4.560 mm					
◇ Outside length :	from 2.250 to 4.650 mm					

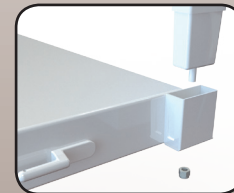
WEIGHT OF KIT

- ◇ 3.300 mm : 300 kg
- ◇ 4.000 mm : 340 kg
- ◇ 4.600 mm : 380 kg



LOAD SECURING DIN EN 12640

ROBUSTNESS DIN EN 12642 CODE L



DROPSIDE

LIGHTNESS AND ROBUSTNESS

- High payload and dropside entirely welded
- Sideboards in massive aluminium profiles with ribbed reinforcements, 2.8 mm thick, 350 mm high, fold-down, removable and interchangeable
- Rear corner pillars in steel, with connecting system and hot-dip galvanized
- Self-adjusting, avoids any backlash
- Removable at any time, ideal to load up bulky goods

MODULARITY

- On customer request, dropside can be equipped with same options than for tipper

Body

- Platform in aluminium profile 5083 H111, 4 mm thick, with reinforcements and tubular side members
- Outer frame adapted to strap tension belts
- Locking-grips integrated in sideboards and rear door, available with double safety system
- Rubber buffer stops on sideboard and rear door hinges, shock-absorbing
- Aluminium bulkhead, welded, 450 mm high
- Steel wire mesh gantry, 4 mm, removable and hot-dip galvanized, available optionally with aluminium plank gantry
- Rear door in massive aluminium profile with ribbed reinforcements, 2.8 mm thick, 350 mm high, fold-down, removable and interchangeable
- Polypropylene mudguards, black, including cathophoretic dip-coating mudguard brackets
- Side underrun protection in Aluminium, black coated, certified according to safety standards
- Geomet treated bolts (5 times more resistant than galvanizing)
- Lashing points in platform available optionally

FINISH

- Coated kit has a total coating thickness of 120 µm
- Shot-blasting
- Polyester top coat supplied separately on each component
- Untreated kit

DROPSIDE

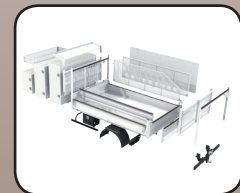
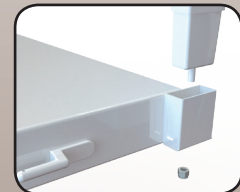
DIMENSIONS

◇ Inside width :	1.800	1.900	2.000	2.100	2.200	mm
◇ Outside width :	1.880	1.980	2.080	2.180	2.280	mm
◇ Inside length :	from 2.110 to 4.510 mm					
◇ Outside length :	from 2.220 to 4.620 mm					

WEIGHT OF KIT

- ◇ 3.300 mm : 222 kg
- ◇ 4.000 mm : 260 kg
- ◇ 4.600 mm : 293 kg





DROPSIDE

ROBUSTNESS

- Dropside entirely welded
- Double-walled sideboards in steel S355, 2 mm thick, non-stop laser welded, 350 mm high, fold-down, removable and interchangeable.
- Smooth steel profiles perfect for advertising.
- Rear corner pillars in steel, with connecting system and hot-dip galvanized
- Self-adjusting, avoids any backlash
- Removable at any time, ideal to load up bulky goods

MODULARITY

- On customer request, dropside can be equipped with same options than for tipper

Body

- Platform in steel profile HX500, 3 mm thick, with reinforcements and tubular side members
- Outer frame adapted to strap tension belts
- Locking-grips integrated in sideboards and rear door, available with double safety system
- Rubber buffer stops on sideboard and rear door hinges, shock-absorbing
- Steel bulkhead S355, welded, 2 mm thick, 450 mm high
- Steel wire mesh gantry, 4 mm, removable and hot-dip galvanized
- Double-walled rear door in steel S355, 2 mm thick, non-stop laser welded, 350 mm high, fold-down, removable and interchangeable
- Polypropylene mudguards, black, including cataphoretic dip-coating mudguard brackets
- Side underrun protection in Aluminium, black coated, certified according to safety standards
- Geomet treated bolts (5 times more resistant than galvanizing)
- Lashing points in platform available optionally

FINISH

- Total coating thickness 120 µm / 1.200 h salt spray
- Shot-blasting
- Anticorrosive coating + polyester top coat applied separately on each component
- Seals between non seam-welded components

DROPSIDE

DIMENSIONS

◇ Inside width :	1.800	1.900	2.000	2.100	2.200	mm
◇ Outside width :	1.880	1.980	2.080	2.180	2.280	mm
◇ Inside length :	from 2.110 to 4.510 mm					
◇ Outside length :	from 2.220 to 4.620 mm					

WEIGHT OF KIT

- ◇ 3.300 mm : 362 kg
- ◇ 4.000 mm : 425 kg
- ◇ 4.600 mm : 479 kg

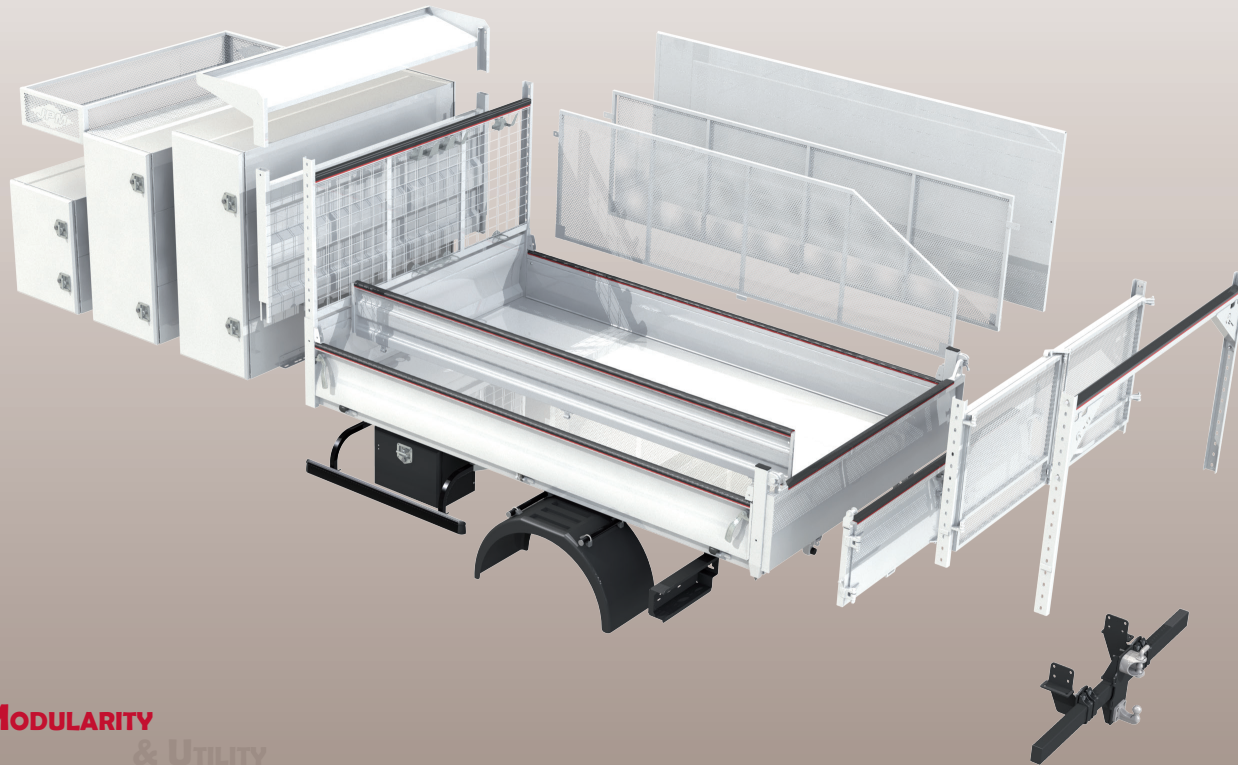


... AROUND **100 OPTIONS** ...

FIT AT ANY TIME ON OUR ENTIRE **PRODUCT RANGE**

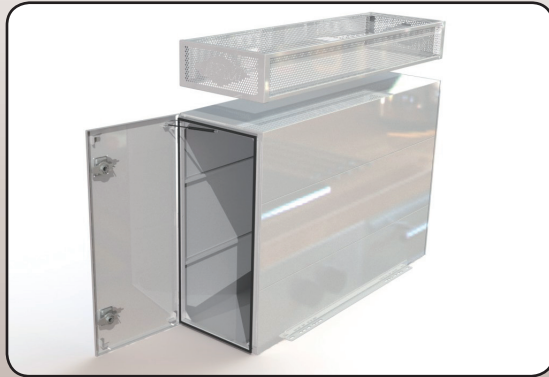
THANKS TO A **COMMON BOLT SYSTEM**

OPTIONS



MODULARITY
& UTILITY

TOOLBOX BEHIND DRIVER'S CAB



ALUMINIUM OR STEEL TOOLBOX

- Aluminium 3 mm thick und steel 2 mm thick
- 2 doors with rubber seal and integrated locks
- Doorway 520 mm
- Gas pressure spring
- Load securing
- Fixation for shelves
- Including subframe extension, in aluminium or steel, depending on toolbox model

DIMENSIONS (in mm) Width 600		WEIGHT (in kg)		Number of shelves
Height	Depth	Aluminium	Steel	
800	1800	60	120	1
800	2000	70	130	1
1300	1800	90	170	2
1300	2000	95	190	2
1500	2000	105	210	3

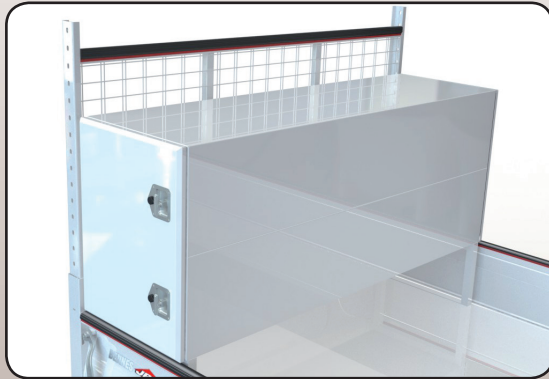
Further dimensions on request.

OPTIONAL

- Wood-made shelves, 15 mm thick
- Tool basket on toolbox, 250 mm high, in aluminium or steel perfo. sheet



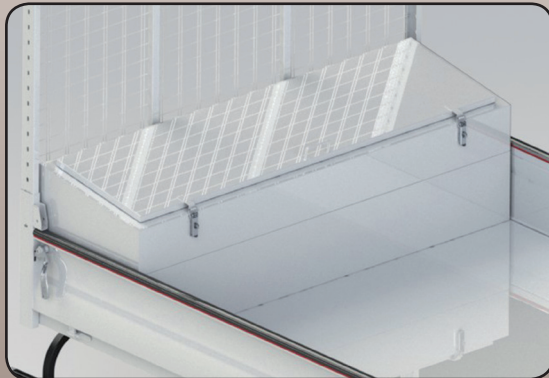
OR ON PLATFORM



TOOLBOX WITH FEET

- Toolbox 800 mm high plus feet
- Feet welded to toolbox, bolted on platform
- Lateral door opening above sideboards
- Further technical data see toolbox page 64

DIMENSIONS (in mm) Width 600		WEIGHT (in kg)	
Height	Depth	Aluminium	Steel
800	1980	70	130



TOOLBOX ON PLATFORM

- Access from above
- Hinged brech blocks to open and close
- Possibility of anti-theft system thanks to padlock
- Further technical data see toolbox page 64

DIMENSIONS (in mm) Width 600		WEIGHT (in kg)	
Height	Depth	Aluminium	Steel
500/600	1980	50	95

STORAGE BOX UNDER FRAME



PLASTIC STORAGE BOX

- Supplied with fixing support
- Lockable



STEEL STORAGE BOX

- Supplied with fixing support
- Lockable

DIMENSIONS (in mm)			WEIGHT (in kg)
Length	Height	Depth	
520	400	350	17
720	400	350	21

UNIVERSAL REAR DOOR AND ACCESSORIES



Steel profile

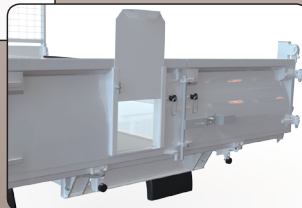
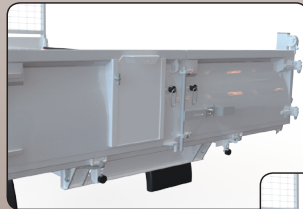


Aluminium profile

UNIVERSAL REAR DOOR = AUTOMATIC OPENING WHEN OSCILLATING AT THE TOP + DOUBLE-WINGED DOOR

- Aluminium 2.8 mm thick and steel 2 mm thick
- 450 mm high
- Reinforced hinges
- Interchangeable with std. rear door at any time

WEIGHT (in kg)	Aluminium	Steel
		34



WICKET IN STEEL REAR DOOR

- Dimensions 300 x 300 mm
- Lockable
- Possibility to block wicket in opened position
- Adaptable on steel standard and universal rear door

REAR UNDERRUN PROTECTION



TRIVA

- Certified under directive 70/221/EC
- Gross vehicle weight rear underrun protection: $\leq 8t$.
- Gross weight hitch block (vehicle + trailer): $\leq 11,5t$.

LIGHT BRACKET

- Set back and high-mounted light brackets
- Lights are protected during tipping

TOWING BALL

- 13-pin plug
- Adapter on request

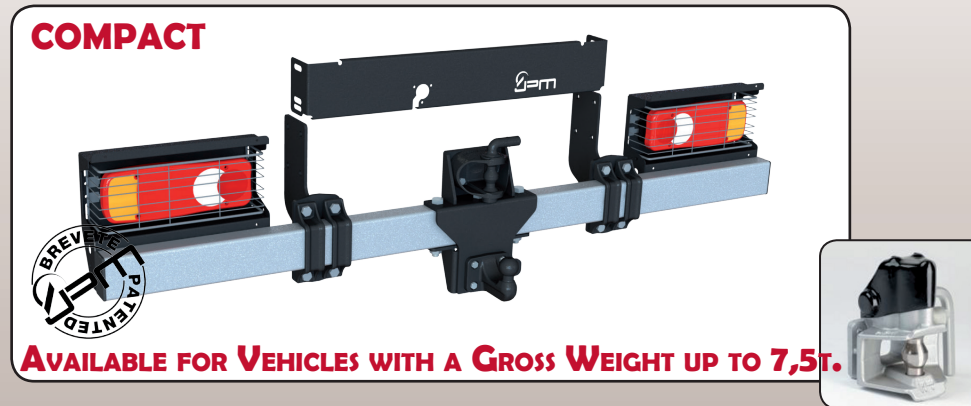
WEIGHT

- Entire system: 45 kg

LIGHT PROTECTION (OPTIONAL)

- Different models available depending on vehicle manufacturer

WITH TOWING DEVICE



COMPACT

AVAILABLE FOR VEHICLES WITH A GROSS WEIGHT UP TO 7,5t.

DUAL TRIVA

- Certified under directive 70/221/EC
- Gross vehicle weight rear underrun protection: ≤ 8t.
- Gross weight hitch block (vehicle + trailer): ≤ 11,5t.

LIGHT BRACKET

- Set back and high-mounted light brackets
- Lights are protected during tipping

PIN COUPLING AND TOWING BALL

- Pin coupling: 2 models available
- 13-pin plug
- Adapter on request

WEIGHT ENTIRE SYSTEM

- Depending on pin coupling: 55-60 kg

LIGHT PROTECTION (OPTIONAL)

SIDEBOARD EXTENSIONS

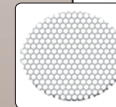
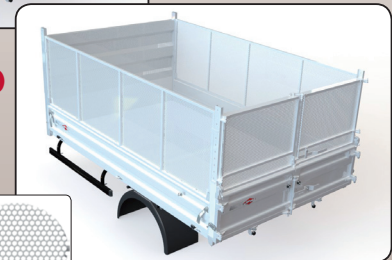
SIDEBOARD EXTENSIONS WITH STRAIGHT SIDES

- Height 450 or 900 mm
- Aluminium perforated sheet
- Steel perforated sheet
- Aluminium metal sheet



DOUBLE-WINGED REAR DOOR EXTENSION (ONLY WITH UNIVERSAL REAR DOOR)

- Height 450 or 900 mm
- Aluminium perforated sheet
- Steel perforated sheet
- Aluminium metal sheet



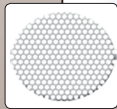
REAR DOOR EXTENSION OSCILLATING AT THE TOP

- Height 450 or 900 mm
- Aluminium perforated sheet
- Steel perforated sheet
- Aluminium metal sheet



SIDEBOARD EXTENSIONS WITH CANTED SIDES

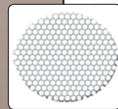
- Height 450 or 900 mm
- Aluminium perforated sheet
- Steel perforated sheet
- Aluminium metal sheet



WEIGHT	Pair sideboard ext. with canted sides		Pair straight sideboard ext.	Pair 1/3-2/3 foldable sideboard ext.
	Height 900	Height 450		
Steel perfo. sheet	24 kg/m	13 kg/m	Weight canted sides + 15 kg	Weight canted sides + 20 kg
Alu perfo. sheet	13 kg/m	7 kg/m		
Alu metal sheet	20 kg/m	10 kg/m		
Rear door ext. Alu metal sheet	25 kg	15 kg		

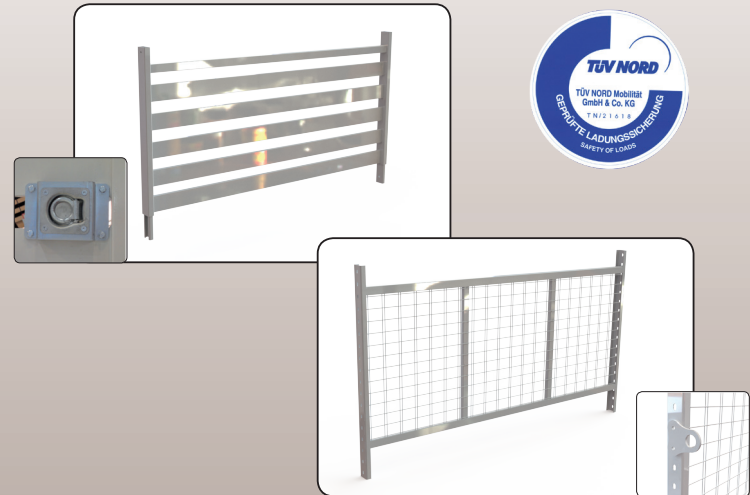
SIDEBOARD EXTENSIONS FOLDABLE 1/3 - 2/3 AT 300 MM

- Height 900 mm
- Aluminium perforated sheet
- Steel perforated sheet
- Aluminium metal sheet



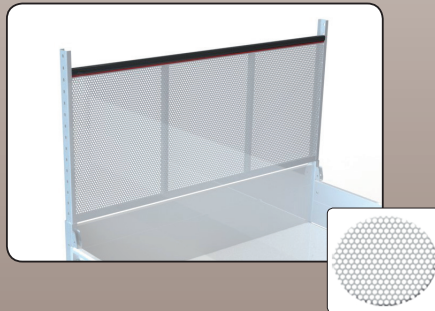
STANDARD ALUMINIUM GANTRY

- Aluminium planks
- Standard equipment by aluminium bodies
- TÜV-certified lashing points available optionally
- Weight: approx. 21.5 kg at 900 mm height



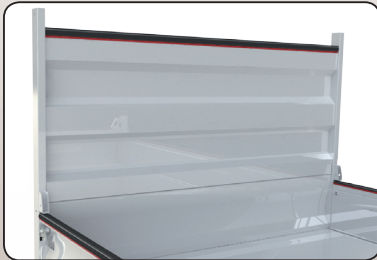
STANDARD STEEL GANTRY

- Wire mesh 4 mm and hot-dip galvanized
- Standard equipment by steel bodies
- TÜV-certified lashing points available optionally
- Weight: approx. 28 kg at 900 mm height



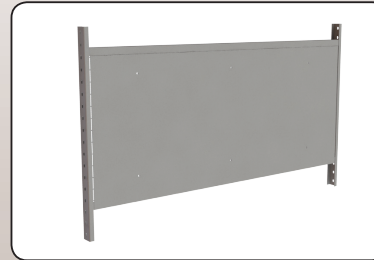
PERFORATED SHEET GANTRY

- Available in perforated steel or aluminium sheet
- Weight aluminium: approx. 23 kg at 900 mm height



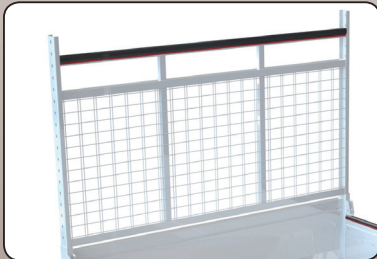
ALUMINIUM METAL SHEET GANTRY (3 MM THICK)

- Weight: approx. 22.5 kg at 900 mm height



ALUMINIUM METAL SHEET (3 MM THICK)

- Kit for standard steel wire mesh gantry



REINFORCED STANDARD GANTRY

- Additional bar perfect for transport of ladders and tubes, max. load 300 kg
- Steel 36 kg and alu 26.5 kg at 900 mm height



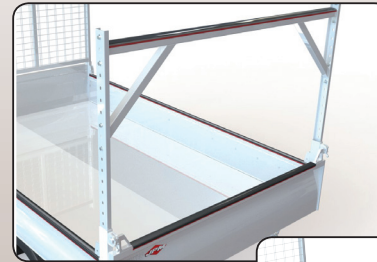
CAB PROTECTION ON GANTRY

- Steel profile 2 mm thick
- Width 480 mm

LADDER HOLDER AND PLASTIC PROTECTION

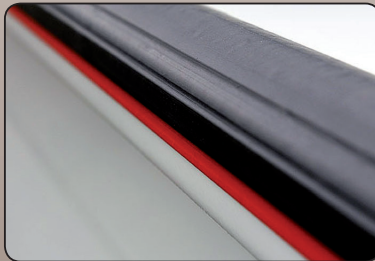
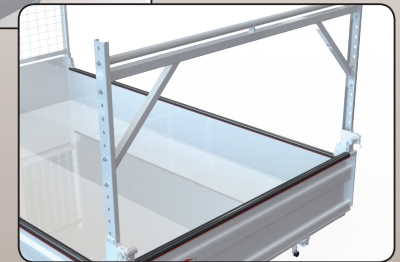
BACKWARD LADDER HOLDER

- Steel
- Removable and height adjustable thanks to a common bolt system
- Max. load 300 kg
- Weight approx. 22 kg



BACKWARD LADDER HOLDER WITH ROLLS

- Steel
- Rolls on entire length
- Removable and height adjustable thanks to a common bolt system
- Max. load 300 kg



PLASTIC PROTECTION

- Adhesive PVC rubber protection for sideboard, rear door, gantry and backward ladder holder profiles

TOOL HOLDER



TOOL HOLDER 3 TOOLS

- Dimensions: 660 x 180 x 140 mm
- Weight: 1.6 kg
- Compact and efficient
- Storage for up to 3 tools (40 mm diameter handle max.)
- Protection of tools tanks to EPDM clip
- Optimal hold of tools with tensioner
- Corrosion free: brushed aluminium 3 mm thick
- Adaptable on meshed, full and aluminium gantry
- Max. 2 tool holders on 1800 mm gantry
- Max. 3 tool holders on 2000 mm gantry

TARPAULIN AND BOW

- Steep aluminium bow: connecting system
- Tarpaulin surface weight 680g/m²
- Tarpaulin standard in grey, other colours available optionally
- Tensioning rope for fixation on sideboards (see page 77)
- Dimensions and weight on request



TARPAULIN ON SIDEBOARDS

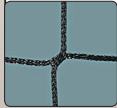
- Tarpaulin surface weight 680g/m²
- Tarpaulin standard in grey, other colours available optionally
- Tensioning rope for fixation on sideboards (see page 77)



TARPAULIN ON SIDEBOARD EXTENSIONS

- Tarpaulin surface weight 680g/m²
- Tarpaulin grey, other colours available optionally
- Tensioning rope for fixation on sideboard extensions (see page 77)

LOAD NETS



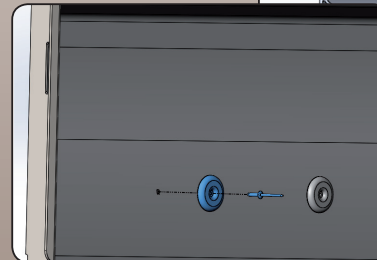
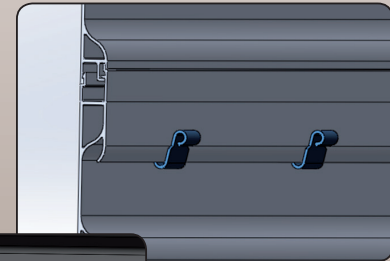
LOAD NET

- Extensible
- Net in synthetic fibre and polypropylene, tear-resistant
- Stitches 30 mm thick, cord diameter 3 mm
- Border reinforced with cord

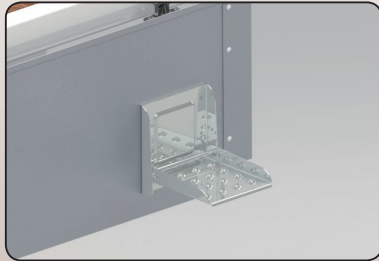
FASTENING EYES AND HOOKS FOR TARPAULIN AND LOAD NET

- Supplied as standard equipment

Fastening hooks for aluminium sideboards: simple clip system



Fastening eyes for steel sideboards and all types of sideboard extensions: must be fixed



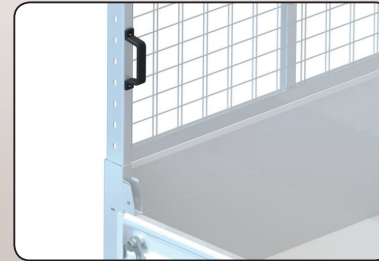
FOLDING FOOTSTEP

- Weight 2 kg



3-STEP LADDER

- Available only for rear tipper, weight 6 kg
- Slip system under platform



HANDGRIP

- Weight 1 kg



STIRRUP TO BOLT

ACCESS



FOLDABLE LOADING RAMPS

- Aluminium loading ramps
- Load capacity by pairs of 450 kg for vehicles with wheelbase 1.500 mm
- Length 3.000 mm, Width 300 mm
- Storage possibility in toolbox or under subframe



LOADING RAMPS

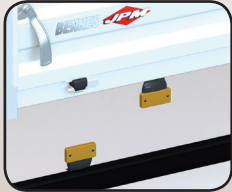
- Aluminium loading ramps
- Load capacity by pairs of 800 kg or 2.000 kg for vehicles with wheelbase 1.500 mm
- Length 3.000 mm, Width 300 mm
- Storage possibility under tipper platform (only available for rear tipper)



ALUMINIUM TAIL LIFT (ADAPTABLE ON TIPPERS AND DROPSIDES)

- Lifting capacity 650 kg
- Loading height 800 mm
- Anti-skid surface
- Steep for optimal access
- Unloading simplified
- Electric unit
- Remote control with up-/down button
- Manual unlocking to activate tail lift function
- Manual opening when dumping
- Anti-dumping safety system

SIGNALISATION



SIDE MARKER LAMPS

- Mandatory for vehicles ≥ 6.000 mm length



OVERALL SIZE LAMPS

- Mandatory for vehicles ≥ 2.100 mm width



WARNING STRIPES

- Class 1
- Class 2



REVOLVING LIGHT

- Incl. fixing bracket
- Orange halogen light
- 149 mm high
- 140 mm diameter



WARNING TRIANGLE (DOUBLE-SIDED)

- To paste, LED lights 74 mm
- Manual lifting
- On/off-button



2 REVOLVING BEACON LIGHTS WITH FIXING BAR

- Metal fixation 1.2 Metre
- To paste
- On/off-button



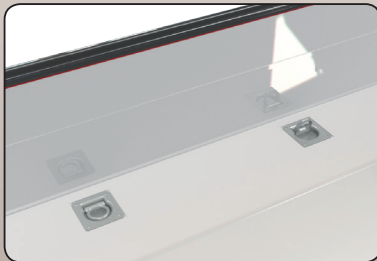
2 REVOLVING BEACON LIGHTS WITH FIXING BAR AND WARNING TRIANGLE

- Metal fixation 1.2 Metre
- To paste
- Warning triangle double-sided
- LED lights 74 mm
- On/off-button in driver's cab
- Automatic or manual lifting



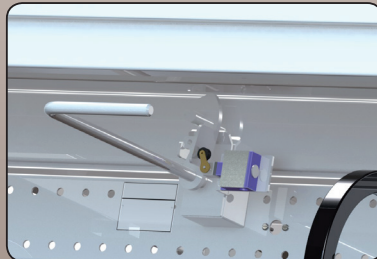
REINFORCEMENTS FOR BODY STRUCTURE

- Reinforcement of steel platform: 4 mm
- Reinforcement of platform for crane installations on platform
- Subframe extension for crane installations between driver's cab and body



LOAD SECURING: LASHING POINTS IN PLATFORM

- TÜV-tested according to DIN EN 12640



SAFETY: TIPPER LOCKING

- Anti-dumping safety system
- Available for tippers with crane on platform or tail lift

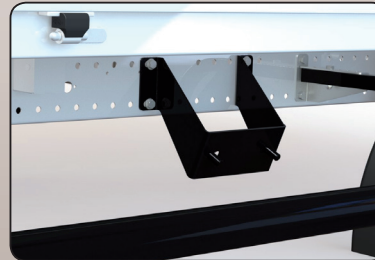
AVAILABLE ON REQUEST

POWER TAKE-OFF

- Tipper standard equipped with electro pump unit
- Power take-off available optionally (detailed information on request)



**REMOTE CONTROL
WITHOUT CABLE**



**EMERGENCY WHEEL
BRACKET ON
SUBFRAME**

FINISH: TIPPER AND DROPSIDE COLOURS

- All bodies are serially delivered in white or metal grey
- Excepted aluminium dropsides with wood platform that are serially delivered in metal or dark grey and steel dropsides with wood platform that are serially delivered in dark grey
- ALL RAL AND VEHICLE MANUFACTURER COLOURS AVAILABLE OPTIONALLY (excepted metallized colours)



YOUR STANDARD BODY + OPTIONS

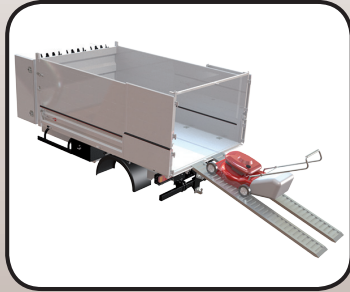
=

A CUSTOM-MADE TIPPER OR DROPSIDE

THE WHOLE YEAR ROUND



CUSTOM-MADE





Loading ramps



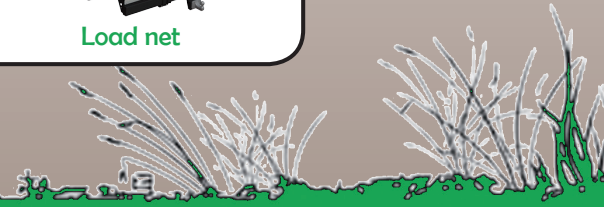
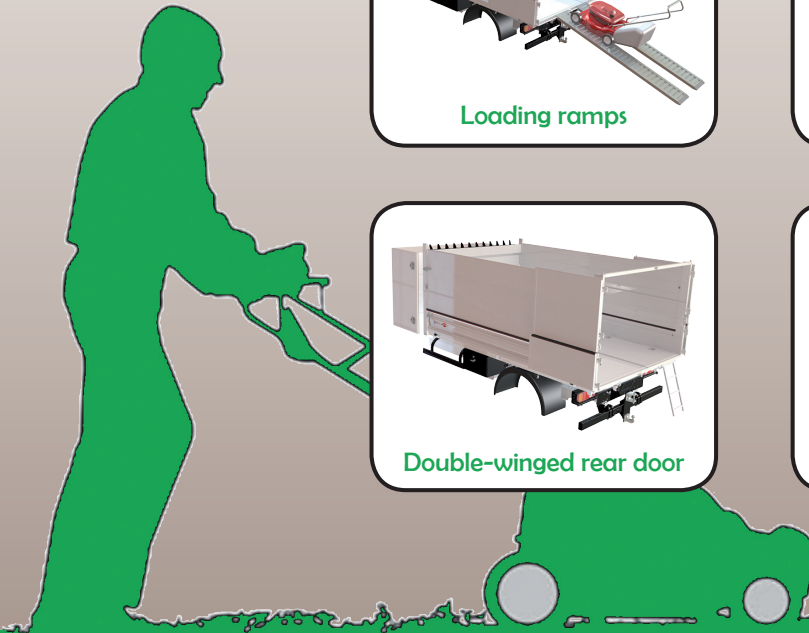
High loading platform

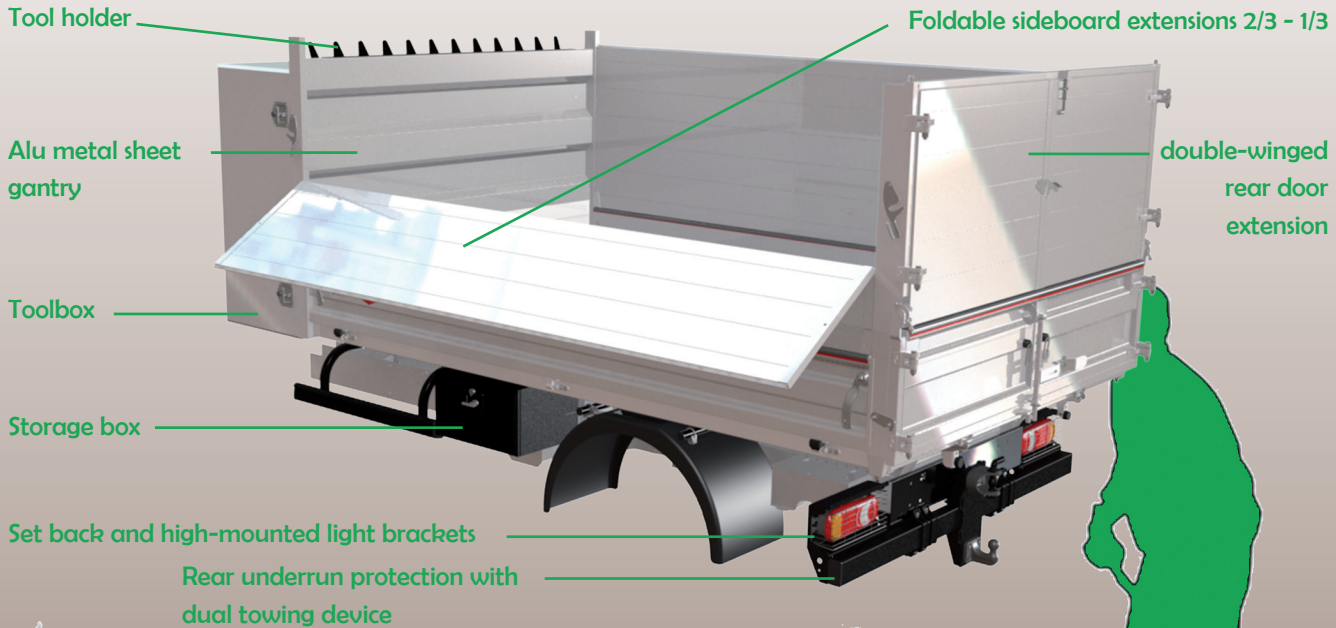


Double-winged rear door



Load net

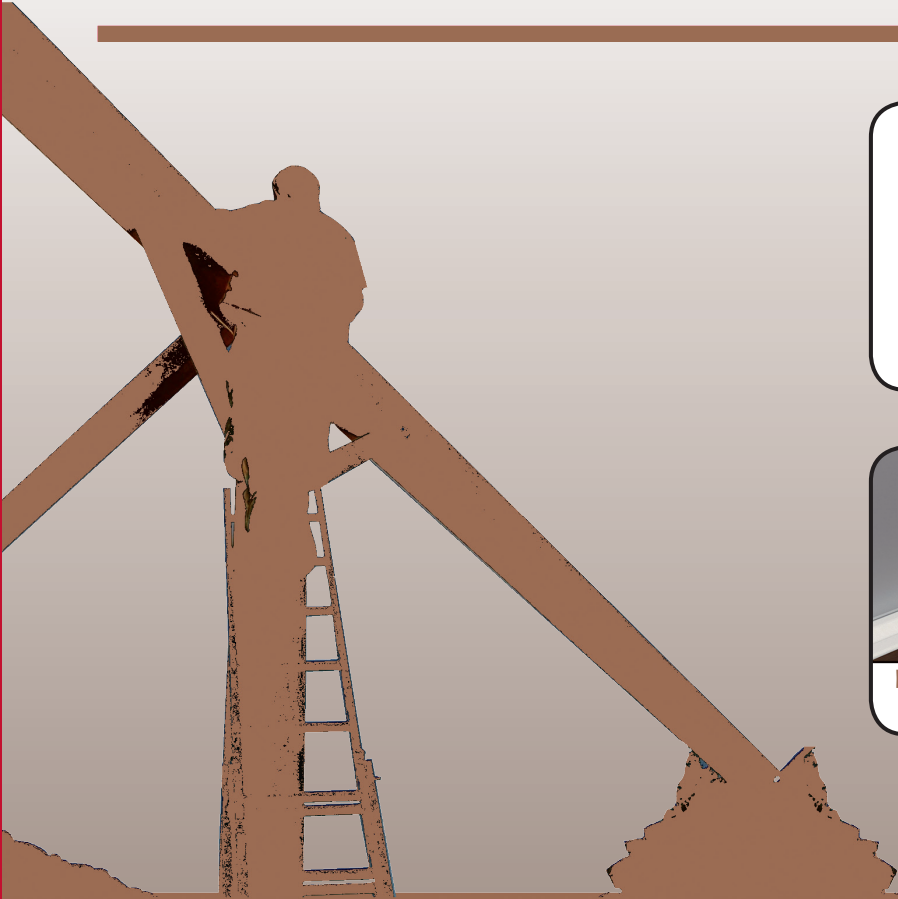






AND BUILDERS

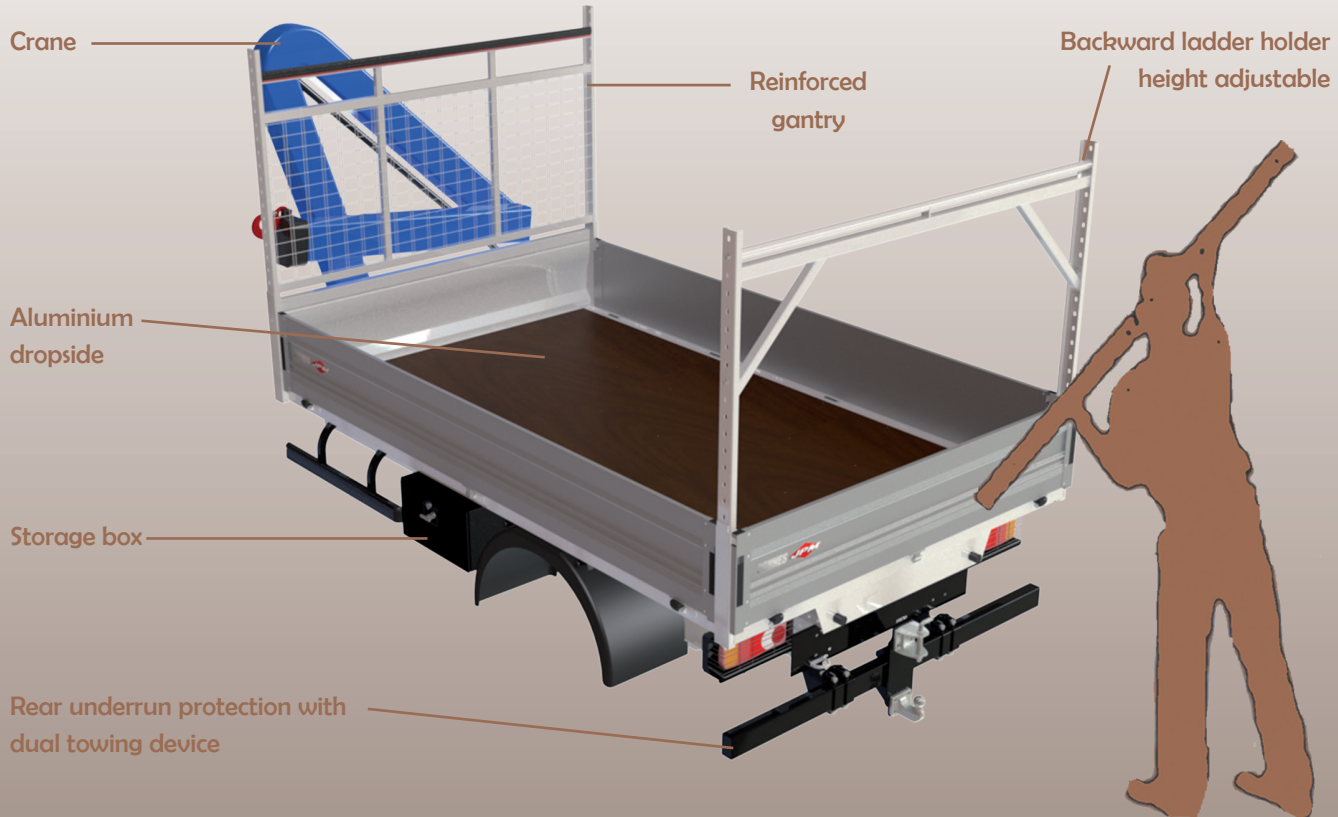




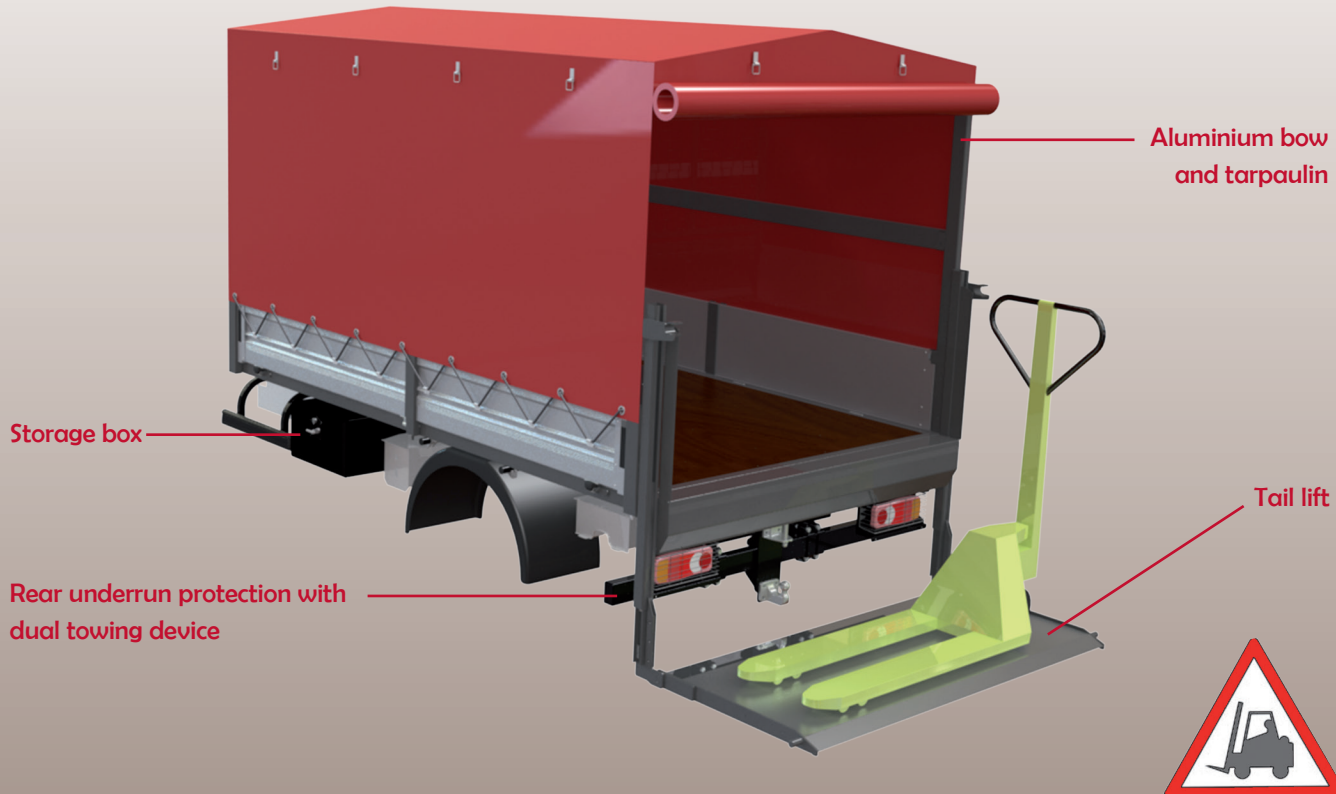
Folding footstep



Integrated and retractable
lashing points











... SEVERAL ADDITIONAL CONFIGURATIONS ...

LET YOUR INDIVIDUAL AND INDUSTRIAL NEEDS

WANDER

Product catalogue © 2016

All copy rights regarding this technical documentation and all drawings submitted to the receiver in person remain at all times with SAS JPM, Naucelle, France. Documentations and drawings must not be copied or reproduced without prior written authorization. They are not binding and may be subjected to changes. All products have to be checked for suitability by the client. Weights are guidance values and in no case binding. The relevant prices are to be requested at the manufacturer.





Headquarters France:

ZA de Merlin - RN 88

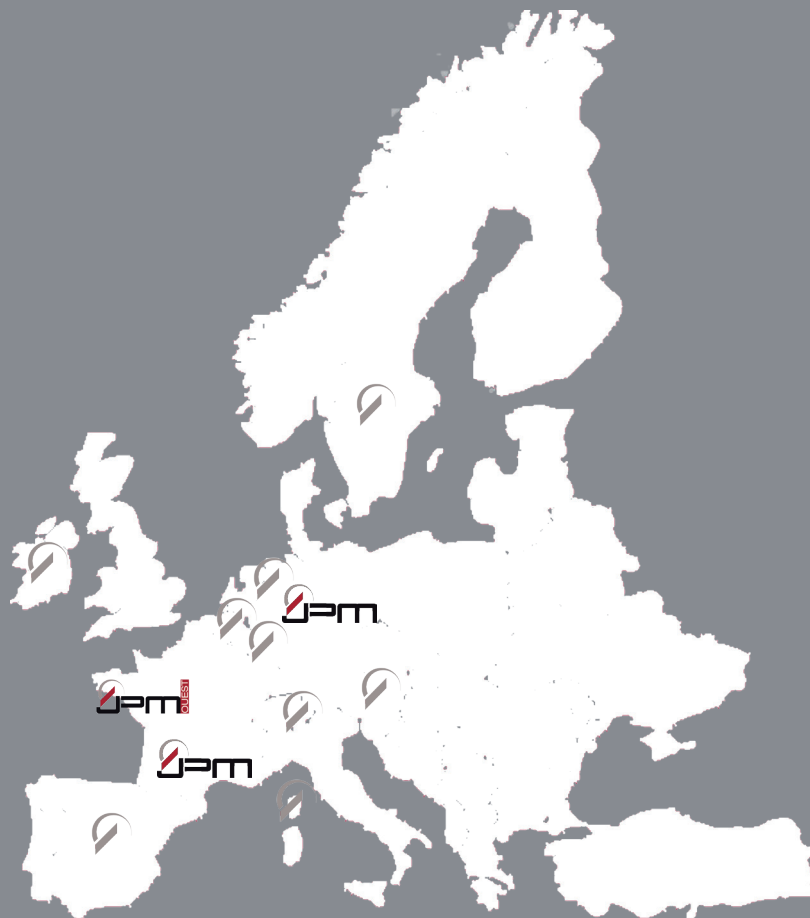
12800 Naucelle

Tel: +33 (0)5 65 69 24 70

Fax: +33 (0)5 65 69 23 77

E-mail: contact@bennes-jpm.com

Website: www.bennes-jpm.com



web